

Cytokeratin 6 (KRT6) Rabbit mAb

Catalog No.: A4631 **Recombinant** **1 Publications**

Basic Information

Observed MW

60kDa

Calculated MW

60kDa

Category

Primary antibody

Applications

ELISA,WB,IHC-P

Cross-Reactivity

Human, Mouse, Rat

CloneNo number

ARC2142

Background

The protein encoded by this gene is a member of the keratin gene family. The type II cytokeratins consist of basic or neutral proteins which are arranged in pairs of heterotypic keratin chains coexpressed during differentiation of simple and stratified epithelial tissues. As many as six of this type II cytokeratin (KRT6) have been identified; the multiplicity of the genes is attributed to successive gene duplication events. The genes are expressed with family members KRT16 and/or KRT17 in the filiform papillae of the tongue, the stratified epithelial lining of oral mucosa and esophagus, the outer root sheath of hair follicles, and the glandular epithelia. This KRT6 gene in particular encodes the most abundant isoform. Mutations in these genes have been associated with pachyonychia congenita. In addition, peptides from the C-terminal region of the protein have antimicrobial activity against bacterial pathogens. The type II cytokeratins are clustered in a region of chromosome 12q12-q13.

Recommended Dilutions

WB	1:1000 - 1:5000
IHC-P	1:50 - 1:200

Immunogen Information

Gene ID

3853

Swiss Prot

P02538

Immunogen

A synthetic peptide corresponding to a sequence within amino acids 1-100 of human Cytokeratin 6 (KRT6) (P02538).

Synonyms

K6A; K6C; K6D; PC3; CK6A; CK6C; CK6D; CK-6C; CK-6E; KRT6C; KRT6D; Cytokeratin 6 (KRT6)

Contact

	400-999-6126
	cn.market@abclonal.com.cn
	www.abclonal.com.cn

Product Information

Source

Rabbit

Isotype

IgG

Purification

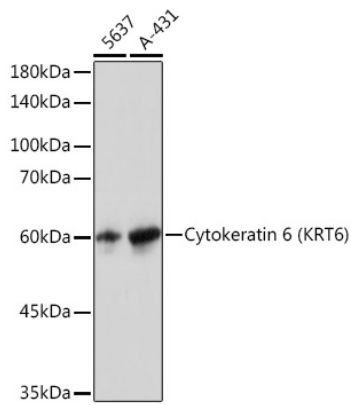
Affinity purification

Storage

Store at -20°C. Avoid freeze / thaw cycles.

Buffer: PBS with 0.02% sodium azide,0.05% BSA,50% glycerol,pH7.3.

Validation Data



Western blot analysis of various lysates using Cytokeratin 6 (KRT6) (KRT6) Rabbit mAb (A4631) at 1:3000 dilution.

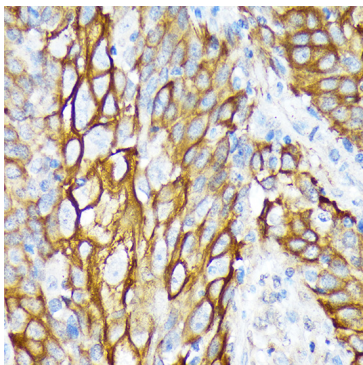
Secondary antibody: HRP Goat Anti-Rabbit IgG (H+L) (AS014) at 1:10000 dilution.

Lysates/proteins: 25µg per lane.

Blocking buffer: 3% nonfat dry milk in TBST.

Detection: ECL Basic Kit (RM00020).

Exposure time: 1s.



Immunohistochemistry analysis of paraffin-embedded Human esophageal cancer using Cytokeratin 6 (KRT6) (KRT6) Rabbit mAb (A4631) at dilution of 1:100 (40x lens). Perform microwave antigen retrieval with 10 mM Tris/EDTA buffer pH 9.0 before commencing with IHC staining protocol.