

AFF4 Rabbit pAb

Catalog No.: A4644 **2 Publications**

Basic Information

Observed MW

150kDa

Calculated MW

127kDa

Category

Primary antibody

Applications

ELISA, WB

Cross-Reactivity

Human, Mouse

Background

The protein encoded by this gene belongs to the AF4 family of transcription factors involved in leukemia. It is a component of the positive transcription elongation factor b (P-TEFb) complex. A chromosomal translocation involving this gene and MLL gene on chromosome 11 is found in infant acute lymphoblastic leukemia with ins(5;11)(q31;q31q23).

Recommended Dilutions

WB 1:500 - 1:2000

Immunogen Information

Gene ID

27125

Swiss Prot

Q9UHB7

Immunogen

Recombinant fusion protein containing a sequence corresponding to amino acids 1-220 of human AFF4 (NP_055238.1).

Synonyms

MCEF; CHOPS; AF5Q31; AFF4

Contact

☎ | 400-999-6126

✉ | cn.market@abclonal.com.cn

🌐 | www.abclonal.com.cn

Product Information

Source

Rabbit

Isotype

IgG

Purification

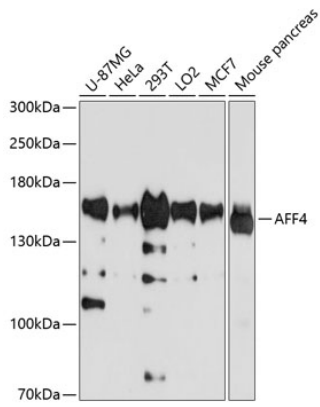
Affinity purification

Storage

Store at -20°C. Avoid freeze / thaw cycles.

Buffer: PBS with 0.02% sodium azide, 50% glycerol, pH7.3.

Validation Data



Western blot analysis of extracts of various cell lines, using AFF4 antibody (A4644) at 1:1000 dilution. Secondary antibody: HRP Goat Anti-Rabbit IgG (H+L) (AS014) at 1:10000 dilution. Lysates/proteins: 25µg per lane. Blocking buffer: 3% nonfat dry milk in TBST. Detection: ECL Basic Kit (RM00020). Exposure time: 30s.