

SIGLEC9 Rabbit pAb

Catalog No.: A4648

Basic Information

Observed MW

50kDa

Calculated MW

50kDa

Category

Primary antibody

Applications

WB,ELISA

Cross-Reactivity

Human, Mouse, Rat

Background

Predicted to enable monosaccharide binding activity and sialic acid binding activity. Predicted to be involved in cell adhesion. Predicted to act upstream of or within negative regulation of inflammatory response and negative regulation of phagocytosis, engulfment. Predicted to be located in external side of plasma membrane. Predicted to be active in plasma membrane.

Recommended Dilutions

WB 1:500 - 1:2000

ELISA Recommended starting concentration is 1 µg/mL. Please optimize the concentration based on your specific assay requirements.

Immunogen Information

Gene ID

27180

Swiss Prot

Q9Y336

Immunogen

Recombinant protein (or fragment). This information is considered to be commercially sensitive.

Synonyms

CD329; CDw329; FOAP-9; siglec-9; OBBP-LIKE; SIGLEC9

Contact

☎ | 400-999-6126

✉ | cn.market@abclonal.com.cn

🌐 | www.abclonal.com.cn

Product Information

Source

Rabbit

Isotype

IgG

Purification

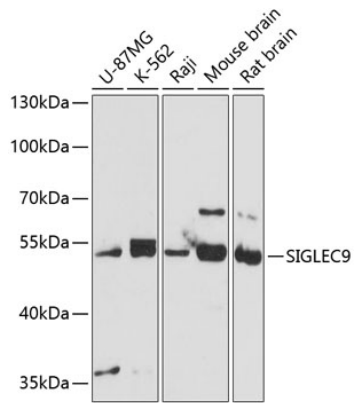
Affinity purification

Storage

Store at -20°C. Avoid freeze / thaw cycles.

Buffer: PBS with 0.01% thimerosal, 50% glycerol, pH7.3.

Validation Data



Western blot analysis of various lysates using SIGLEC9 Rabbit pAb (A4648) at 1:3000 dilution.
Secondary antibody: HRP-conjugated Goat anti-Rabbit IgG (H+L) (AS014) at 1:10000 dilution.
Lysates/proteins: 25µg per lane.
Blocking buffer: 3% nonfat dry milk in TBST.
Detection: ECL Basic Kit (RM00020).
Exposure time: 10s.