

IFT81 Rabbit pAb

Catalog No.: A4662

Basic Information

Observed MW

79kDa

Calculated MW

80kDa

Category

Primary antibody

Applications

WB,ELISA

Cross-Reactivity

Human, Mouse, Rat

Background

The protein encoded by this gene, together with IFT74, forms a tubulin-binding module of intraflagellar transport complex B. This module is involved in transport of tubulin within the cilium, and the encoded protein is required for ciliogenesis. Mutations in this gene are a cause of short-rib polydactyly syndromes.

Recommended Dilutions

WB 1:500 - 1:2000

ELISA Recommended starting concentration is 1 µg/mL. Please optimize the concentration based on your specific assay requirements.

Immunogen Information

Gene ID

28981

Swiss Prot

Q8WYAO

Immunogen

Recombinant protein (or fragment). This information is considered to be commercially sensitive.

Synonyms

DV1; CDV1; CDV-1; CDV1R; CDV-1R; SRTD19; IFT81

Contact

☎ | 400-999-6126

✉ | cn.market@abclonal.com.cn

🌐 | www.abclonal.com.cn

Product Information

Source

Rabbit

Isotype

IgG

Purification

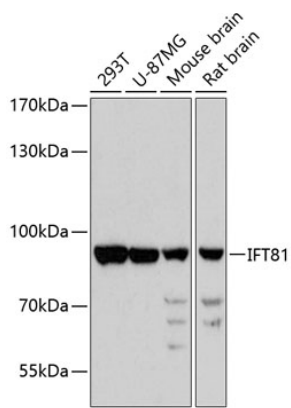
Affinity purification

Storage

Store at -20°C. Avoid freeze / thaw cycles.

Buffer: PBS with 0.01% thimerosal, 50% glycerol, pH7.3.

Validation Data



Western blot analysis of various lysates using IFT81 Rabbit pAb (A4662) at 1:3000 dilution.
Secondary antibody: HRP-conjugated Goat anti-Rabbit IgG (H+L) (AS014) at 1:10000 dilution.
Lysates/proteins: 25µg per lane.
Blocking buffer: 3% nonfat dry milk in TBST.
Detection: ECL Basic Kit (RM00020).
Exposure time: 90s.