

HSP105/HSPH1 Rabbit mAb

Catalog No.: A4687 **Recombinant** **1 Publications**

Basic Information

Observed MW

105kDa

Calculated MW

97kDa

Category

Primary antibody

Applications

ELISA, WB

Cross-Reactivity

Human, Mouse, Rat

CloneNo number

ARC1092

Background

This gene encodes a member of the heat shock protein 70 family of proteins. The encoded protein functions as a nucleotide exchange factor for the molecular chaperone heat shock cognate 71 kDa protein (Hsc70). In addition, this protein plays a distinct but related role as a holdase that inhibits the aggregation of misfolded proteins, including the cystic fibrosis transmembrane conductance regulator (CFTR) protein. Elevated expression of this protein has been observed in numerous human cancers.

Recommended Dilutions

WB 1:500 - 1:1000

Immunogen Information

Gene ID

10808

Swiss Prot

Q92598

Immunogen

A synthetic peptide corresponding to a sequence within amino acids 1-100 of human HSP105/HSPH1 (Q92598).

Synonyms

HSP105; HSP105A; HSP105B; NY-CO-25; HSP105/HSPH1

Contact

 | 400-999-6126

 | cn.market@abclonal.com.cn

 | www.abclonal.com.cn

Product Information

Source

Rabbit

Isotype

IgG

Purification

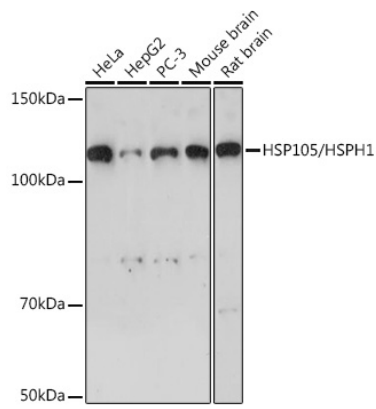
Affinity purification

Storage

Store at -20°C. Avoid freeze / thaw cycles.

Buffer: PBS with 0.02% sodium azide, 0.05% BSA, 50% glycerol, pH7.3.

Validation Data



Western blot analysis of extracts of various cell lines, using HSP105/HSPH1 Rabbit mAb (A4687) at 1:1000 dilution.

Secondary antibody: HRP Goat Anti-Rabbit IgG (H+L) (AS014) at 1:10000 dilution.

Lysates/proteins: 25µg per lane.

Blocking buffer: 3% nonfat dry milk in TBST.

Detection: ECL Basic Kit (RM00020).

Exposure time: 90s.