

# RHCG Rabbit pAb

Catalog No.: A4739

## Basic Information

### Observed MW

57kDa

### Calculated MW

53kDa

### Category

Primary antibody

### Applications

WB

### Cross-Reactivity

Human, Mouse

## Background

Enables ammonium transmembrane transporter activity; ankyrin binding activity; and identical protein binding activity. Involved in ammonium transmembrane transport; cellular ion homeostasis; and transepithelial ammonium transport. Located in apical plasma membrane and basolateral plasma membrane. Is integral component of plasma membrane.

## Recommended Dilutions

WB 1:200 - 1:2000

## Immunogen Information

### Gene ID

51458

### Swiss Prot

Q9UBD6

### Immunogen

A synthetic peptide of human RHCG

### Synonyms

RHGK; PDRC2; C15orf6; SLC42A3; RHCG

## Contact

☎ | 400-999-6126

✉ | [cn.market@abclonal.com.cn](mailto:cn.market@abclonal.com.cn)

🌐 | [www.abclonal.com.cn](http://www.abclonal.com.cn)

## Product Information

### Source

Rabbit

### Isotype

IgG

### Purification

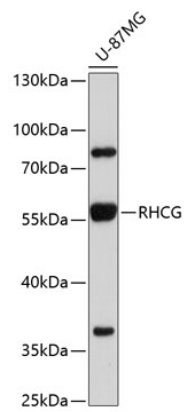
Affinity purification

### Storage

Store at 4°C. Avoid freeze / thaw cycles.

Buffer: PBS with 0.02% sodium azide, pH7.3.

# Validation Data



Western blot analysis of extracts of U-87MG cells, using RHCG antibody (A4739) at 1:1000 dilution. Secondary antibody: HRP Goat Anti-Rabbit IgG (H+L) (AS014) at 1:10000 dilution. Lysates/proteins: 25µg per lane. Blocking buffer: 3% nonfat dry milk in TBST. Detection: ECL Enhanced Kit (RM00021). Exposure time: 90s.