

NELFCD Rabbit pAb

Catalog No.: A4741

Basic Information

Observed MW

66kDa

Calculated MW

66kDa

Category

Primary antibody

Applications

ELISA, WB, IHC-P

Cross-Reactivity

Human, Mouse, Rat

Background

The NELF complex of proteins interacts with the DSIF protein complex to repress transcriptional elongation by RNA polymerase II. The protein encoded by this gene is an essential part of the NELF complex. Alternative translation initiation site usage results in the formation of two isoforms with different N-termini.

Recommended Dilutions

WB 1:500 - 1:1000

IHC-P 1:50 - 1:200

Immunogen Information

Gene ID

51497

Swiss Prot

Q8IXH7

Immunogen

Recombinant fusion protein containing a sequence corresponding to amino acids 40-182 of human NELFCD (NP_945327.3).

Synonyms

TH1; TH1L; NELF-C; NELF-D; HSPC130; NELFCD

Contact

☎ | 400-999-6126

✉ | cn.market@abclonal.com.cn

🌐 | www.abclonal.com.cn

Product Information

Source

Rabbit

Isotype

IgG

Purification

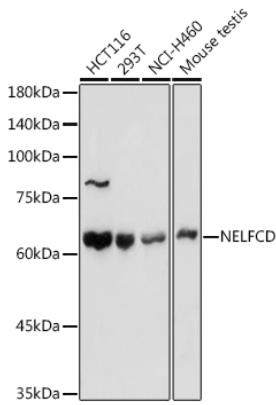
Affinity purification

Storage

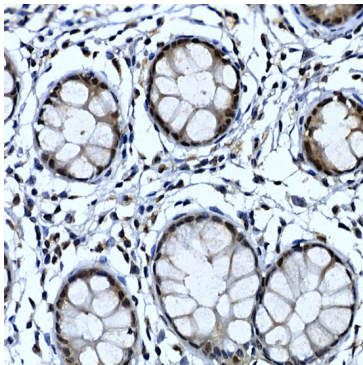
Store at -20°C. Avoid freeze / thaw cycles.

Buffer: PBS with 0.05% proclin300, 50% glycerol, pH7.3.

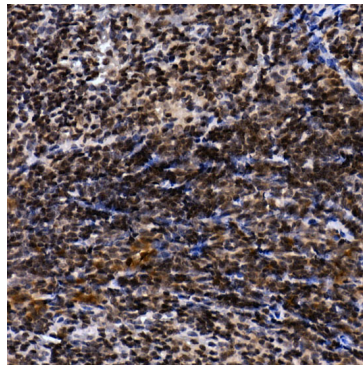
Validation Data



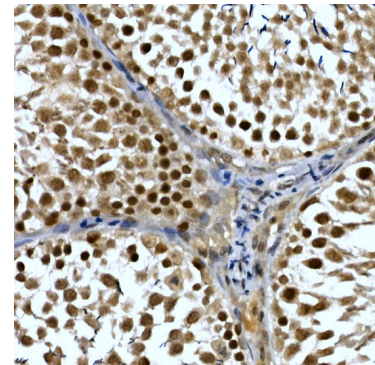
Western blot analysis of various lysates using NELFCD Rabbit pAb (A4741) at 1:1000 dilution. Secondary antibody: HRP Goat Anti-Rabbit IgG (H+L) (AS014) at 1:10000 dilution. Lysates/proteins: 25µg per lane. Blocking buffer: 3% nonfat dry milk in TBST. Detection: ECL Basic Kit (RM00020). Exposure time: 10s.



Immunohistochemistry analysis of paraffin-embedded Human colon using NELFCD Rabbit pAb (A4741) at dilution of 1:50 (40x lens). Perform high pressure antigen retrieval with 10 mM citrate buffer pH 6.0 before commencing with IHC staining protocol.



Immunohistochemistry analysis of paraffin-embedded Mouse spleen using NELFCD Rabbit pAb (A4741) at dilution of 1:50 (40x lens). Perform high pressure antigen retrieval with 10 mM citrate buffer pH 6.0 before commencing with IHC staining protocol.



Immunohistochemistry analysis of paraffin-embedded Rat testis using NELFCD Rabbit pAb (A4741) at dilution of 1:50 (40x lens). Perform high pressure antigen retrieval with 10 mM citrate buffer pH 6.0 before commencing with IHC staining protocol.