

RHOF Rabbit pAb

Catalog No.: A4786

Basic Information

Observed MW

27kDa

Calculated MW

24kDa

Category

Primary antibody

Applications

WB,ELISA

Cross-Reactivity

Human, Mouse

Background

Predicted to enable GTP binding activity; GTPase activity; and protein kinase binding activity. Involved in actin filament organization. Located in extracellular exosome.

Recommended Dilutions

WB 1:500 - 1:2000

ELISA Recommended starting concentration is 1 µg/mL. Please optimize the concentration based on your specific assay requirements.

Immunogen Information

Gene ID

54509

Swiss Prot

Q9HBH0

Immunogen

Recombinant protein (or fragment). This information is considered to be commercially sensitive.

Synonyms

RIF; ARHF; RHOF

Contact

 | 400-999-6126

 | cn.market@abclonal.com.cn

 | www.abclonal.com.cn

Product Information

Source

Rabbit

Isotype

IgG

Purification

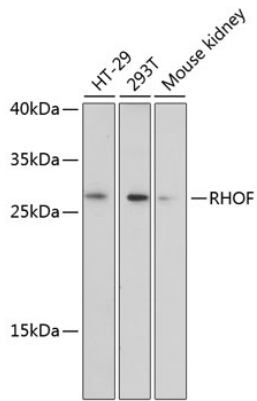
Affinity purification

Storage

Store at -20°C. Avoid freeze / thaw cycles.

Buffer: PBS with 0.01% thimerosal, 50% glycerol, pH7.3.

Validation Data



Western blot analysis of various lysates using RHOV Rabbit pAb (A4786) at 1:3000 dilution.
Secondary antibody: HRP-conjugated Goat anti-Rabbit IgG (H+L) (AS014) at 1:10000 dilution.
Lysates/proteins: 25µg per lane.
Blocking buffer: 3% nonfat dry milk in TBST.
Detection: ECL Enhanced Kit (RM00021).
Exposure time: 90s.