

Collagen XVII/COL17A1 Rabbit mAb

Catalog No.: A4808 **Recombinant** **1 Publications**

Basic Information

Observed MW

150-180kDa

Calculated MW

150kDa

Category

Primary antibody

Applications

ELISA,WB,IHC-P

Cross-Reactivity

Human

CloneNo number

ARC0233

Background

This gene encodes the alpha chain of type XVII collagen. Unlike most collagens, collagen XVII is a transmembrane protein. Collagen XVII is a structural component of hemidesmosomes, multiprotein complexes at the dermal-epidermal basement membrane zone that mediate adhesion of keratinocytes to the underlying membrane. Mutations in this gene are associated with both generalized atrophic benign and junctional epidermolysis bullosa. Two homotrimeric forms of type XVII collagen exist. The full length form is the transmembrane protein. A soluble form, referred to as either ectodomain or LAD-1, is generated by proteolytic processing of the full length form.

Recommended Dilutions

WB	1:500 - 1:1000
IHC-P	1:50 - 1:200

Immunogen Information

Gene ID

1308

Swiss Prot

Q9UMD9

Immunogen

A synthetic peptide corresponding to a sequence within amino acids 1300-1400 of human Collagen XVII/COL17A1 (Q9UMD9).

Synonyms

ERED; JEB4; BP180; BPA-2; BPAG2; LAD-1; BA16H23.2; Collagen XVII/COL17A1

Contact

☎ | 400-999-6126

✉ | cn.market@abclonal.com.cn

🌐 | www.abclonal.com.cn

Product Information

Source

Rabbit

Isotype

IgG

Purification

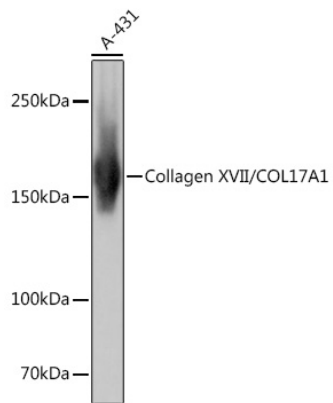
Affinity purification

Storage

Store at -20°C. Avoid freeze / thaw cycles.

Buffer: PBS with 0.02% sodium azide,0.05% BSA,50% glycerol,pH7.3.

Validation Data



Western blot analysis of lysates from A-431 cells, using Collagen XVII/COL17A1 Rabbit mAb (A4808) at 1:1000 dilution.

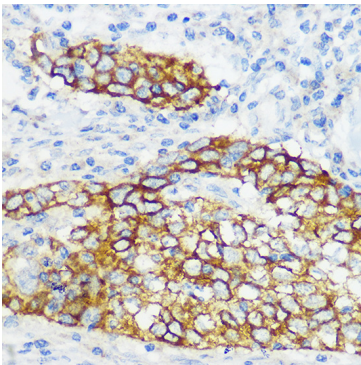
Secondary antibody: HRP Goat Anti-Rabbit IgG (H+L) (AS014) at 1:10000 dilution.

Lysates/proteins: 25µg per lane.

Blocking buffer: 3% nonfat dry milk in TBST.

Detection: ECL Basic Kit (RM00020).

Exposure time: 1s.



Immunohistochemistry analysis of paraffin-embedded Human esophageal cancer using Collagen XVII/COL17A1 Rabbit mAb (A4808) at dilution of 1:100 (40x lens). Perform microwave antigen retrieval with 10 mM Tris/EDTA buffer pH 9.0 before commencing with IHC staining protocol.