

IRF2 Rabbit mAb

Catalog No.: A4843

Recombinant

1 Publications

Basic Information

Observed MW

50kDa

Calculated MW

39kDa

Category

Primary antibody

Applications

ELISA, WB, IP

Cross-Reactivity

Human

CloneNo number

ARC0265

Background

IRF2 encodes interferon regulatory factor 2, a member of the interferon regulatory transcription factor (IRF) family. IRF2 competitively inhibits the IRF1-mediated transcriptional activation of interferons alpha and beta, and presumably other genes that employ IRF1 for transcription activation. However, IRF2 also functions as a transcriptional activator of histone H4.

Recommended Dilutions

WB 1:500 - 1:1000

IP 0.5µg-4µg antibody for
200µg-400µg extracts of
whole cells

Immunogen Information

Gene ID

3660

Swiss Prot

P14316

Immunogen

A synthetic peptide corresponding to a sequence within amino acids 250-349 of human IRF2 (P14316).

Synonyms

IRF-2; IRF2

Contact

☎ | 400-999-6126

✉ | cn.market@abclonal.com.cn

🌐 | www.abclonal.com.cn

Product Information

Source

Rabbit

Isotype

IgG

Purification

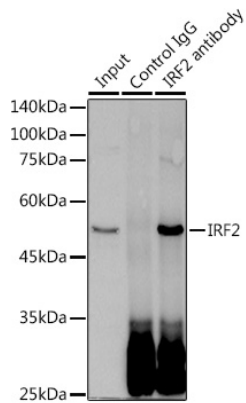
Affinity purification

Storage

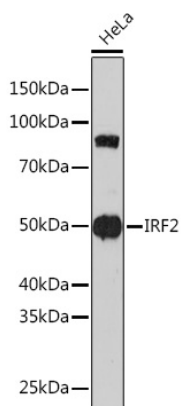
Store at -20°C. Avoid freeze / thaw cycles.

Buffer: PBS with 0.02% sodium azide, 0.05% BSA, 50% glycerol, pH7.3.

Validation Data



Immunoprecipitation analysis of 300 µg extracts of HeLa cells using 3 µg IRF2 antibody (A4843). Western blot was performed from the immunoprecipitate using IRF2 (A4843) at a dilution of 1:500.



Western blot analysis of lysates from HeLa cells, using IRF2 Rabbit mAb (A4843) at 1:1000 dilution. Secondary antibody: HRP Goat Anti-Rabbit IgG (H+L) (AS014) at 1:10000 dilution. Lysates/proteins: 25µg per lane. Blocking buffer: 3% nonfat dry milk in TBST. Detection: ECL Enhanced Kit (RM00021). Exposure time: 3min.