

Cytokeratin 15 (KRT15) Rabbit mAb

Catalog No.: A4854 **Recombinant** **2 Publications**

Basic Information

Observed MW

49kDa

Calculated MW

49kDa

Category

Primary antibody

Applications

ELISA, WB, IF/ICC

Cross-Reactivity

Human, Rat

CloneNo number

ARC0270

Background

The protein encoded by this gene is a member of the keratin gene family. The keratins are intermediate filament proteins responsible for the structural integrity of epithelial cells and are subdivided into cytokeratins and hair keratins. Most of the type I cytokeratins consist of acidic proteins which are arranged in pairs of heterotypic keratin chains and are clustered in a region on chromosome 17q21.2.

Recommended Dilutions

WB	1:500 - 1:1000
IF/ICC	1:50 - 1:200

Immunogen Information

Gene ID

3866

Swiss Prot

P19012

Immunogen

A synthetic peptide corresponding to a sequence within amino acids 357-456 of human Cytokeratin 15 (KRT15) (KRT15) (P19012).

Synonyms

K15; CK15; K1CO; Cytokeratin 15 (KRT15)

Contact

☎ | 400-999-6126

✉ | cn.market@abclonal.com.cn

🌐 | www.abclonal.com.cn

Product Information

Source

Rabbit

Isotype

IgG

Purification

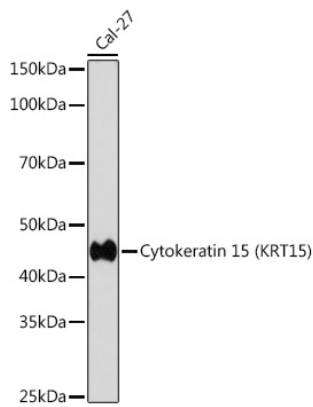
Affinity purification

Storage

Store at -20°C. Avoid freeze / thaw cycles.

Buffer: PBS with 0.02% sodium azide, 0.05% BSA, 50% glycerol, pH7.3.

Validation Data



Western blot analysis of extracts of CAL 27 cells, using Cytokeratin 15 (KRT15) (KRT15) antibody (A4854) at 1:1000 dilution.

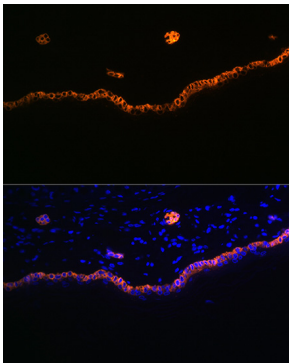
Secondary antibody: HRP Goat Anti-Rabbit IgG (H+L) (AS014) at 1:10000 dilution.

Lysates/proteins: 25µg per lane.

Blocking buffer: 3% nonfat dry milk in TBST.

Detection: ECL Basic Kit (RM00020).

Exposure time: 180s.



Immunofluorescence analysis of rat skin using Cytokeratin 15 (KRT15) (KRT15) Rabbit mAb (A4854) at dilution of 1:100 (40x lens).
Blue: DAPI for nuclear staining.