

RAB9A Rabbit mAb

Catalog No.: A4894

Recombinant

2 Publications

Basic Information

Observed MW

23kDa

Calculated MW

23kDa

Category

Primary antibody

Applications

WB,IF/ICC,ELISA

Cross-Reactivity

Human, Mouse, Rat

CloneNo number

ARC0332

Background

Enables GDP binding activity; GTP binding activity; and GTPase activity. Involved in negative regulation by host of symbiont catalytic activity; positive regulation of exocytosis; and regulation of protein localization. Located in late endosome; lysosome; and phagocytic vesicle.

Recommended Dilutions

WB 1:500 - 1:2000

IF/ICC 1:50 - 1:200

ELISA Recommended starting concentration is 1 µg/mL. Please optimize the concentration based on your specific assay requirements.

Immunogen Information

Gene ID

9367

Swiss Prot

P51151

Immunogen

Synthetic peptide. This information is considered to be commercially sensitive.

Synonyms

RAB9; RAB9A

Contact

☎ | 400-999-6126

✉ | cn.market@abclonal.com.cn

🌐 | www.abclonal.com.cn

Product Information

Source

Rabbit

Isotype

IgG

Purification

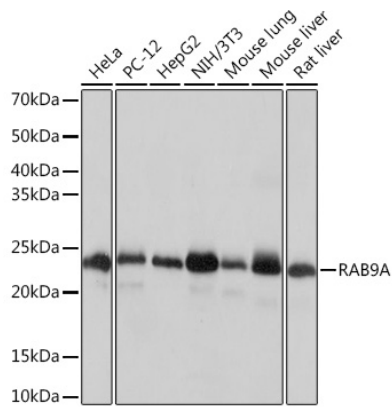
Affinity purification

Storage

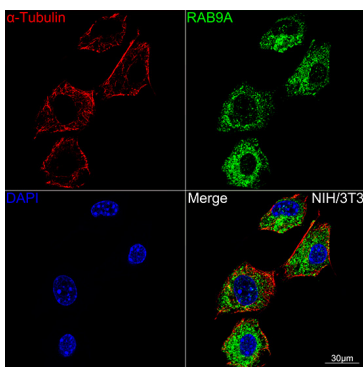
Store at -20°C. Avoid freeze / thaw cycles.

Buffer: PBS containing 50% glycerol and 0.05% BSA, preserved with proclin300 or sodium azide (as specified on the Certificate of Analysis), pH 7.3.

Validation Data



Western blot analysis of various lysates using RAB9A Rabbit mAb (A4894) at 1:1000 dilution.
Secondary antibody: HRP-conjugated Goat anti-Rabbit IgG (H+L) (AS014) at 1:10000 dilution.
Lysates/proteins: 25µg per lane.
Blocking buffer: 3% nonfat dry milk in TBST.
Detection: ECL Basic Kit (RM00020).
Exposure time: 1s.



Confocal imaging of NIH/3T3 cells using RAB9A Rabbit mAb (A4894, dilution 1:100) (Green). The cells were counterstained with Alpha-tubulin (ubiquitous) chain Rabbit mAb (AC039, dilution 1:100) (Red). DAPI was used for nuclear staining (blue). Objective: 60x.