

KIF23 Rabbit mAb

Catalog No.: A4896 **Recombinant** **1 Publications**

Basic Information

Observed MW

115kDa

Calculated MW

110kDa

Category

Primary antibody

Applications

ELISA, WB, IP

Cross-Reactivity

Human, Rat

CloneNo number

ARC0335

Background

The protein encoded by this gene is a member of kinesin-like protein family. This family includes microtubule-dependent molecular motors that transport organelles within cells and move chromosomes during cell division. This protein has been shown to cross-bridge antiparallel microtubules and drive microtubule movement in vitro. Alternate splicing of this gene results in multiple transcript variants.

Recommended Dilutions

WB	1:500 - 1:1000
IP	0.5µg-4µg antibody for 200µg-400µg extracts of whole cells

Immunogen Information

Gene ID

9493

Swiss Prot

Q02241

Immunogen

Recombinant fusion protein containing a sequence corresponding to amino acids 801-960 of human KIF23 (Q02241).

Synonyms

CDA3; CHO1; CDAN3; KNSL5; MKLP1; CDAlII; CDAN3A; MKLP-1; KIF23

Contact

		400-999-6126
		cn.market@abclonal.com.cn
		www.abclonal.com.cn

Product Information

Source

Rabbit

Isotype

IgG

Purification

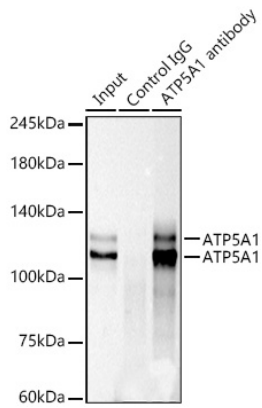
Affinity purification

Storage

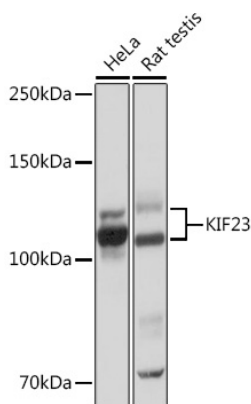
Store at -20°C. Avoid freeze / thaw cycles.

Buffer: PBS with 0.02% sodium azide, 0.05% BSA, 50% glycerol, pH7.3.

Validation Data



Immunoprecipitation analysis of 300 μ g extracts of HeLa cells using 3 μ g KIF23 antibody (A4896). Western blot was performed from the immunoprecipitate using KIF23 antibody (A4896) at a dilution of 1:1000.



Western blot analysis of various lysates using KIF23 Rabbit mAb (A4896) at 1:1000 dilution. Secondary antibody: HRP Goat Anti-Rabbit IgG (H+L) (AS014) at 1:10000 dilution. Lysates/proteins: 25 μ g per lane. Blocking buffer: 3% nonfat dry milk in TBST. Detection: ECL Basic Kit (RM00020). Exposure time: 10s.