

COLEC11 Rabbit pAb

Catalog No.: A4955

Basic Information

Observed MW

29kDa

Calculated MW

29kDa

Category

Primary antibody

Applications

ELISA, WB, IHC-P

Cross-Reactivity

Human, Mouse, Rat

Background

This gene encodes a member of the collectin family of C-type lectins that possess collagen-like sequences and carbohydrate recognition domains. Collectins are secreted proteins that play important roles in the innate immune system by binding to carbohydrate antigens on microorganisms, facilitating their recognition and removal. The encoded protein binds to multiple sugars with a preference for fucose and mannose. Mutations in this gene are a cause of 3MC syndrome-2. Alternatively spliced transcript variants encoding multiple isoforms have been observed for this gene.

Recommended Dilutions

WB	1:500 - 1:1000
IHC-P	1:50 - 1:100

Immunogen Information

Gene ID

78989

Swiss Prot

Q9BWP8

Immunogen

Recombinant fusion protein containing a sequence corresponding to amino acids 26-271 of human COLEC11 (NP_076932.1).

Synonyms

3MC2; CLK1; CL-11; CL-K1-I; CL-K1-II; CL-K1-IIa; CL-K1-IIb; COLEC11

Contact

☎ | 400-999-6126

✉ | cn.market@abclonal.com.cn

🌐 | www.abclonal.com.cn

Product Information

Source

Rabbit

Isotype

IgG

Purification

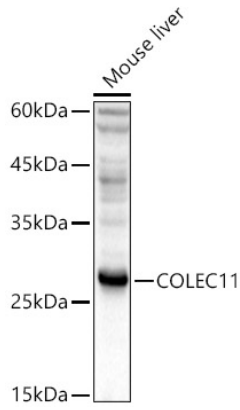
Affinity purification

Storage

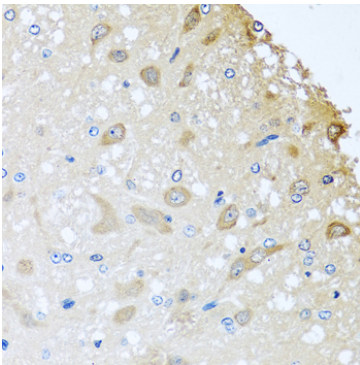
Store at -20°C. Avoid freeze / thaw cycles.

Buffer: PBS with 0.05% proclin300, 50% glycerol, pH7.3.

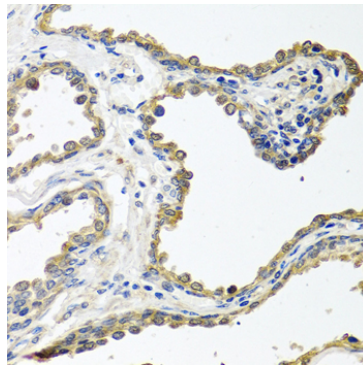
Validation Data



Western blot analysis of lysates from Mouse liver, using COLEC11 Rabbit pAb (A4955) at 1:1000 dilution.
Secondary antibody: HRP Goat Anti-Rabbit IgG (H+L) (AS014) at 1:10000 dilution.
Lysates/proteins: 25µg per lane.
Blocking buffer: 3% nonfat dry milk in TBST.
Detection: ECL Basic Kit (RM00020).
Exposure time: 10s.



Immunohistochemistry analysis of paraffin-embedded Rat brain using COLEC11 Rabbit pAb (A4955) at dilution of 1:100 (40x lens). Perform microwave antigen retrieval with 10 mM PBS buffer pH 7.2 before commencing with IHC staining protocol.



Immunohistochemistry analysis of paraffin-embedded Human prostate using COLEC11 Rabbit pAb (A4955) at dilution of 1:100 (40x lens). Perform microwave antigen retrieval with 10 mM PBS buffer pH 7.2 before commencing with IHC staining protocol.