

NLRX1 Rabbit pAb

Catalog No.: A4976

1 Publications

Basic Information

Observed MW

108kDa

Calculated MW

108kDa

Category

Primary antibody

Applications

WB,IP,ELISA

Cross-Reactivity

Human, Mouse, Rat

Background

The protein encoded by this gene is a member of the NLR family and localizes to the outer mitochondrial membrane. The encoded protein is a regulator of mitochondrial antiviral responses. Three transcript variants encoding the same protein have been found for this gene.

Recommended Dilutions

WB 1:500 - 1:2000

IP 0.5µg-4µg antibody for
400µg-600µg extracts of
whole cells

ELISA Recommended starting
concentration is 1 µg/mL.
Please optimize the
concentration based on
your specific assay
requirements.

Contact

☎ | 400-999-6126

✉ | cn.market@abclonal.com.cn

🌐 | www.abclonal.com.cn

Immunogen Information

Gene ID

79671

Swiss Prot

Q86UT6

Immunogen

Recombinant fusion protein containing a sequence corresponding to amino acids 87-360 of human NLRX1 (NP_078894.2).

Synonyms

NOD5; NOD9; NOD26; DLNB26; CLR11.3; NLRX1

Product Information

Source

Rabbit

Isotype

IgG

Purification

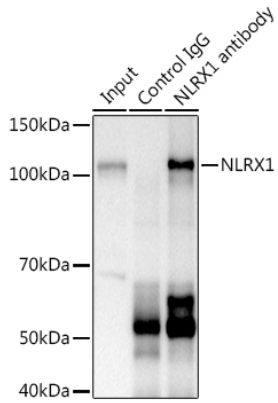
Affinity purification

Storage

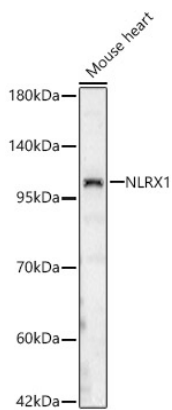
Store at -20°C. Avoid freeze / thaw cycles.

Buffer: PBS with 0.05% proclin300,50% glycerol,pH7.3.

Validation Data



Immunoprecipitation analysis of 600 μ g extracts of Mouse kidney using 3 μ g NLRX1 antibody (A4976). Western blot was performed from the immunoprecipitate using NLRX1 (A4976) at a dilution of 1:1000.



Western blot analysis of lysates from Mouse heart, using NLRX1 Rabbit pAb (A4976) at 1:2000 dilution. Secondary antibody: HRP-conjugated Goat anti-Rabbit IgG (H+L) (AS014) at 1:10000 dilution. Lysates/proteins: 25 μ g per lane. Blocking buffer: 3% nonfat dry milk in TBST. Detection: ECL Basic Kit (RM00020). Exposure time: 60s.