

# PAR4 Rabbit mAb

Catalog No.: A4983

Recombinant

2 Publications

## Basic Information

### Observed MW

41kDa

### Calculated MW

37kDa

### Category

Primary antibody

### Applications

WB, IHC-P, ELISA

### Cross-Reactivity

Human, Mouse

### CloneNo number

ARC1980

## Background

This gene encodes a tumor suppressor protein that selectively induces apoptosis in cancer cells through intracellular and extracellular mechanisms. The intracellular mechanism involves the inhibition of pro-survival pathways and the activation of Fas-mediated apoptosis, while the extracellular mechanism involves the binding of a secreted form of this protein to glucose regulated protein 78 (GRP78) on the cell surface, which leads to activation of the extrinsic apoptotic pathway. This gene is located on the unstable human chromosomal 12q21 region and is often deleted or mutated in different tumors. The encoded protein also plays an important role in the progression of age-related diseases.

## Recommended Dilutions

**WB** 1:1000 - 1:6000

**IHC-P** 1:50 - 1:200

**ELISA** Recommended starting concentration is 1 µg/mL. Please optimize the concentration based on your specific assay requirements.

## Immunogen Information

### Gene ID

5074

### Swiss Prot

Q96IZ0

### Immunogen

Synthetic peptide. This information is considered to be commercially sensitive.

### Synonyms

PAR4; Par-4

## Contact

☎ | 400-999-6126

✉ | [cn.market@abclonal.com.cn](mailto:cn.market@abclonal.com.cn)

🌐 | [www.abclonal.com.cn](http://www.abclonal.com.cn)

## Product Information

### Source

Rabbit

### Isotype

IgG

### Purification

Affinity purification

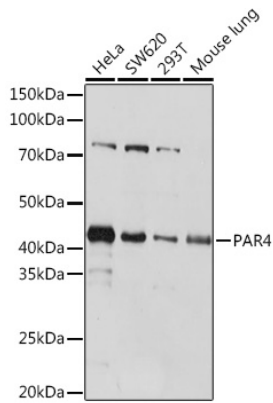
### Storage

Store at -20°C. Avoid freeze / thaw cycles.

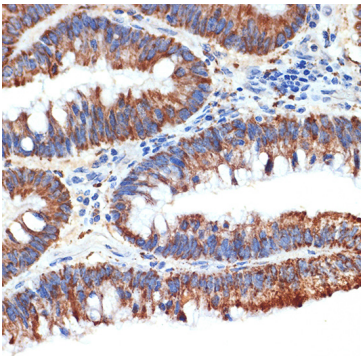
Buffer: PBS containing 50% glycerol and 0.05% BSA, preserved with proclin300 or sodium azide (as specified on the Certificate of Analysis), pH 7.3.

## Validation Data

---



Western blot analysis of various lysates using PAR4 Rabbit mAb (A4983) at 1:1000 dilution.  
Secondary antibody: HRP-conjugated Goat anti-Rabbit IgG (H+L) (AS014) at 1:10000 dilution.  
Lysates/proteins: 25µg per lane.  
Blocking buffer: 3% nonfat dry milk in TBST.  
Detection: ECL Basic Kit (RM00020).  
Exposure time: 10s.



Immunohistochemistry analysis of paraffin-embedded Human colon carcinoma using PAR4 Rabbit mAb (A4983) at dilution of 1:100 (40x lens). Microwave antigen retrieval performed with 0.01M Tris/EDTA Buffer (pH 9.0) prior to IHC staining.