

RMI1 Rabbit pAb

Catalog No.: A4991

Basic Information

Observed MW

75kDa

Calculated MW

70kDa

Category

Primary antibody

Applications

ELISA, WB

Cross-Reactivity

Human, Mouse

Background

Predicted to enable nucleotide binding activity. Predicted to be involved in double-strand break repair via homologous recombination and resolution of meiotic recombination intermediates. Predicted to act upstream of or within glucose homeostasis; reduction of food intake in response to dietary excess; and response to glucose. Located in nuclear body.

Recommended Dilutions

WB 1:200 - 1:2000

Immunogen Information

Gene ID

80010

Swiss Prot

Q9H9A7

Immunogen

Recombinant fusion protein containing a sequence corresponding to amino acids 1-350 of human RMI1 (NP_079221.2).

Synonyms

BLAP75; FAAP75; C9orf76; RMI1

Contact

☎ | 400-999-6126

✉ | cn.market@abclonal.com.cn

🌐 | www.abclonal.com.cn

Product Information

Source

Rabbit

Isotype

IgG

Purification

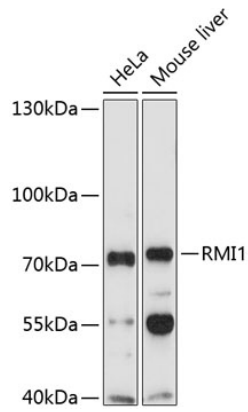
Affinity purification

Storage

Store at -20°C. Avoid freeze / thaw cycles.

Buffer: PBS with 0.02% sodium azide, 50% glycerol, pH 7.3.

Validation Data



Western blot analysis of extracts of various cell lines, using RMI1 Antibody (A4991) at 1:1000 dilution.
Secondary antibody: HRP Goat Anti-Rabbit IgG (H+L) (AS014) at 1:10000 dilution.
Lysates/proteins: 25µg per lane.
Blocking buffer: 3% nonfat dry milk in TBST.
Detection: ECL Enhanced Kit (RM00021).
Exposure time: 90s.