

MAGT1 Rabbit pAb

Catalog No.: A5039 **1 Publications**

Basic Information

Observed MW

50kDa

Calculated MW

38kDa

Category

Primary antibody

Applications

ELISA, WB

Cross-Reactivity

Human

Background

This gene encodes a ubiquitously expressed magnesium cation transporter protein that localizes to the cell membrane. This protein also associates with N-oligosaccharyl transferase and therefore may have a role in N-glycosylation. Mutations in this gene cause a form of X-linked intellectual disability (XLID). This gene may have multiple in-frame translation initiation sites, one of which would encode a shorter protein with an N-terminus containing a signal peptide at amino acids 1-29.

Recommended Dilutions

WB 1:500 - 1:1000

Immunogen Information

Gene ID

84061

Swiss Prot

Q9H0U3

Immunogen

Recombinant fusion protein containing a sequence corresponding to amino acids 60-220 of human MAGT1 (NP_115497.4).

Synonyms

IAP; XMEN; MRX95; OST3B; CDG1CC; PRO0756; SLC58A1; bA217H1.1; MAGT1

Contact

☎ | 400-999-6126

✉ | cn.market@abclonal.com.cn

🌐 | www.abclonal.com.cn

Product Information

Source

Rabbit

Isotype

IgG

Purification

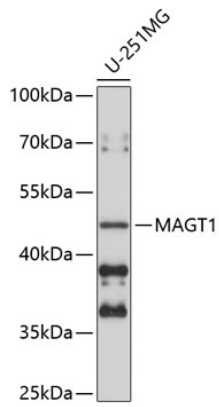
Affinity purification

Storage

Store at -20°C. Avoid freeze / thaw cycles.

Buffer: PBS with 0.02% sodium azide, 50% glycerol, pH 7.3.

Validation Data



Western blot analysis of extracts of U-251MG cells, using MAGT1 antibody (A5039) at 1:1000 dilution.
Secondary antibody: HRP Goat Anti-Rabbit IgG (H+L) (A5014) at 1:10000 dilution.
Lysates/proteins: 25µg per lane.
Blocking buffer: 3% nonfat dry milk in TBST.
Detection: ECL Basic Kit (RM00020).
Exposure time: 90s.