

EEA1 Rabbit mAb

Catalog No.: A5057 **Recombinant**

Basic Information

Observed MW

170kDa

Calculated MW

162kDa

Category

Primary antibody

Applications

ELISA, WB

Cross-Reactivity

Human, Mouse, Rat

CloneNo number

ARC1250

Background

Enables 1-phosphatidylinositol binding activity; GTP-dependent protein binding activity; and protein homodimerization activity. Involved in endocytosis; vesicle fusion; and viral RNA genome replication. Located in cytosol and early endosome. Is extrinsic component of plasma membrane.

Recommended Dilutions

WB 1:500 - 1:1000

Immunogen Information

Gene ID

8411

Swiss Prot

Q15075

Immunogen

A synthetic peptide corresponding to a sequence within amino acids 1-100 of human EEA1 (Q15075).

Synonyms

MST105; ZFYVE2; MSTP105; EEA1

Contact

☎ | 400-999-6126

✉ | cn.market@abclonal.com.cn

🌐 | www.abclonal.com.cn

Product Information

Source

Rabbit

Isotype

IgG

Purification

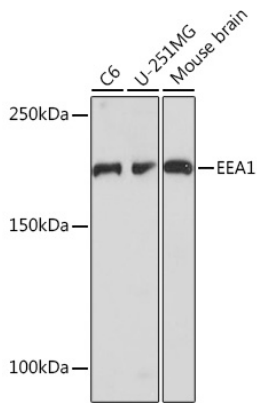
Affinity purification

Storage

Store at -20°C. Avoid freeze / thaw cycles.

Buffer: PBS with 0.02% sodium azide, 0.05% BSA, 50% glycerol, pH7.3.

Validation Data



Western blot analysis of extracts of various cell lines, using EEA1 Rabbit mAb (A5057) at 1:1000 dilution.
Secondary antibody: HRP Goat Anti-Rabbit IgG (H+L) (AS014) at 1:10000 dilution.
Lysates/proteins: 25µg per lane.
Blocking buffer: 3% nonfat dry milk in TBST.
Detection: ECL Basic Kit (RM00020).
Exposure time: 10s.