

Cullin 4A Rabbit mAb

Catalog No.: A5064 **Recombinant** **2 Publications**

Basic Information

Observed MW

88kDa

Calculated MW

88kDa

Category

Primary antibody

Applications

WB,IHC-P,ELISA

Cross-Reactivity

Human

CloneNo number

ARC1237

Background

CUL4A is the ubiquitin ligase component of a multimeric complex involved in the degradation of DNA damage-response proteins (Liu et al., 2009 [PubMed 19481525]).

Recommended Dilutions

WB 1:500 - 1:2000

IHC-P 1:50 - 1:200

ELISA Recommended starting concentration is 1 µg/mL. Please optimize the concentration based on your specific assay requirements.

Immunogen Information

Gene ID

8451

Swiss Prot

Q13619

Immunogen

Synthetic peptide. This information is considered to be commercially sensitive.

Synonyms

CUL4A; cullin-4A; Cullin 4A

Contact

☎ | 400-999-6126

✉ | cn.market@abclonal.com.cn

🌐 | www.abclonal.com.cn

Product Information

Source

Rabbit

Isotype

IgG

Purification

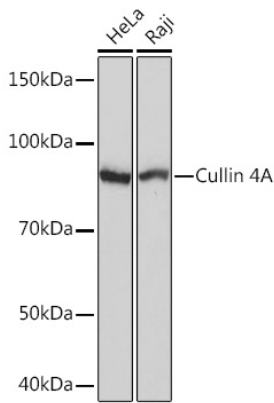
Affinity purification

Storage

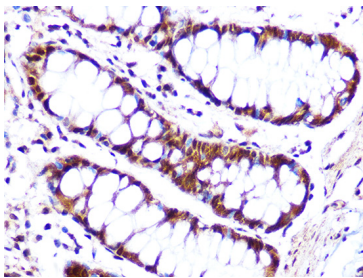
Store at -20°C. Avoid freeze / thaw cycles.

Buffer: PBS with 0.09% Sodium azide,0.05% BSA,50% glycerol,pH7.3.

Validation Data



Western blot analysis of various lysates using Cullin 4A Rabbit mAb (A5064) at 1:1000 dilution.
Secondary antibody: HRP-conjugated Goat anti-Rabbit IgG (H+L) (AS014) at 1:10000 dilution.
Lysates/proteins: 25 μ g per lane.
Blocking buffer: 3% nonfat dry milk in TBST.
Detection: ECL Basic Kit (RM00020).
Exposure time: 3s.



Immunohistochemistry analysis of paraffin-embedded Human colon using Cullin 4A Rabbit mAb (A5064) at dilution of 1:100 (40x lens). Microwave antigen retrieval performed with 0.01M Tris/EDTA Buffer (pH 9.0) prior to IHC staining.