

HLTF Rabbit mAb

Catalog No.: A5068 **Recombinant** **2 Publications**

Basic Information

Observed MW

114kDa

Calculated MW

114kDa

Category

Primary antibody

Applications

ELISA, WB

Cross-Reactivity

Human, Mouse, Rat

CloneNo number

ARC1982

Background

This gene encodes a member of the SWI/SNF family. Members of this family have helicase and ATPase activities and are thought to regulate transcription of certain genes by altering the chromatin structure around those genes. The encoded protein contains a RING finger DNA binding motif. Two transcript variants encoding the same protein have been found for this gene. However, use of an alternative translation start site produces an isoform that is truncated at the N-terminus compared to the full-length protein.

Recommended Dilutions

WB 1:500 - 1:1000

Immunogen Information

Gene ID

6596

Swiss Prot

Q14527

Immunogen

A synthetic peptide corresponding to a sequence within amino acids 900-1009 of human HLTF (Q14527).

Synonyms

ZBU1; HLTF1; RNF80; HIP116; SNF2L3; HIP116A; SMARCA3; HLTF

Contact

☎ | 400-999-6126

✉ | cn.market@abclonal.com.cn

🌐 | www.abclonal.com.cn

Product Information

Source

Rabbit

Isotype

IgG

Purification

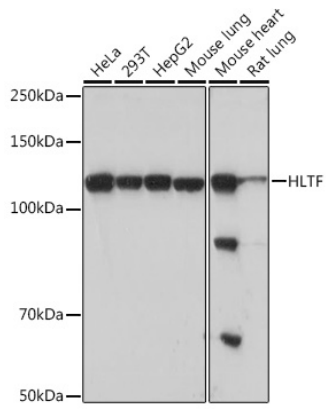
Affinity purification

Storage

Store at -20°C. Avoid freeze / thaw cycles.

Buffer: PBS with 0.02% sodium azide, 0.05% BSA, 50% glycerol, pH7.3.

Validation Data



Western blot analysis of extracts of various cell lines, using HLF Rabbit mAb (A5068) at 1:1000 dilution.
Secondary antibody: HRP Goat Anti-Rabbit IgG (H+L) (AS014) at 1:10000 dilution.
Lysates/proteins: 25µg per lane.
Blocking buffer: 3% nonfat dry milk in TBST.
Detection: ECL Basic Kit (RM00020).
Exposure time: 30s.