

p60 CAF1 Rabbit mAb

Catalog No.: A5073 **Recombinant**

Basic Information

Observed MW

70kDa

Calculated MW

61kDa

Category

Primary antibody

Applications

WB,IHC-P,ELISA

Cross-Reactivity

Human

CloneNo number

ARC1269

Background

Chromatin assembly factor I (CAF-I) is required for the assembly of histone octamers onto newly-replicated DNA. CAF-I is composed of three protein subunits, p50, p60, and p150. The protein encoded by this gene corresponds to the p60 subunit and is required for chromatin assembly after replication. The encoded protein is differentially phosphorylated in a cell cycle-dependent manner. In addition, it is normally found in the nucleus except during mitosis, when it is released into the cytoplasm. This protein is a member of the WD-repeat HIR1 family and may also be involved in DNA repair.

Recommended Dilutions

WB 1:500 - 1:2000**IHC-P** 1:50 - 1:200

ELISA Recommended starting concentration is 1 µg/mL. Please optimize the concentration based on your specific assay requirements.

Immunogen Information

Gene ID

8208

Swiss Prot

Q13112

Immunogen

Recombinant protein (or fragment). This information is considered to be commercially sensitive.

Synonyms

CAF1; MPP7; CAF-1; CAF1A; CAF1P60; CAF-IP60; MPHOSPH7; p60 CAF1

Contact

 | 400-999-6126 | cn.market@abclonal.com.cn | www.abclonal.com.cn

Product Information

Source

Rabbit

Isotype

IgG

Purification

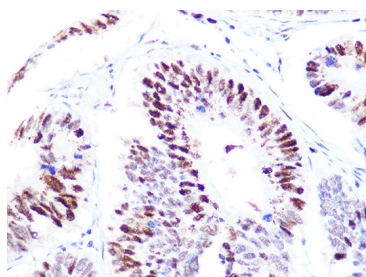
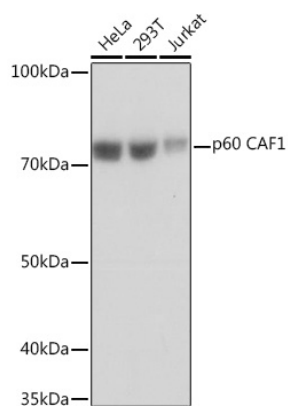
Affinity purification

Storage

Store at -20°C. Avoid freeze / thaw cycles.

Buffer: PBS with 0.02% sodium azide, 0.05% BSA, 50% glycerol, pH7.3.

Validation Data



Immunohistochemistry analysis of paraffin-embedded Human colon carcinoma using p60 CAF1 Rabbit mAb (A5073) at dilution of 1:100 (40x lens). Microwave antigen retrieval performed with 0.01M PBS Buffer (pH 7.2) prior to IHC staining.