

[KO Validated] ATPIF1 Rabbit pAb

Catalog No.: A5099 **KO Validated**

Basic Information

Observed MW

12kDa

Calculated MW

12kDa

Category

Primary antibody

Applications

ELISA, WB, IF/ICC, IP

Cross-Reactivity

Human, Mouse

Background

Enables several functions, including ATPase binding activity; angiostatin binding activity; and mitochondrial proton-transporting ATP synthase complex binding activity. Involved in several processes, including mitochondrial depolarization; negative regulation of ATPase activity; and regulation of protein targeting to mitochondrion. Located in cell surface and mitochondrion.

Recommended Dilutions

WB 1:500 - 1:1000

IF/ICC 1:50 - 1:100

IP 0.5µg-4µg antibody for
200µg-400µg extracts of
whole cells

Immunogen Information

Gene ID

93974

Swiss Prot

Q9UII2

Immunogen

Recombinant fusion protein containing a sequence corresponding to amino acids 26-106 of human ATPIF1 (NP_057395.1).

Synonyms

IP; ATPI; ATPIP; ATPIF1; F1

Contact

☎ | 400-999-6126

✉ | cn.market@abclonal.com.cn

🌐 | www.abclonal.com.cn

Product Information

Source

Rabbit

Isotype

IgG

Purification

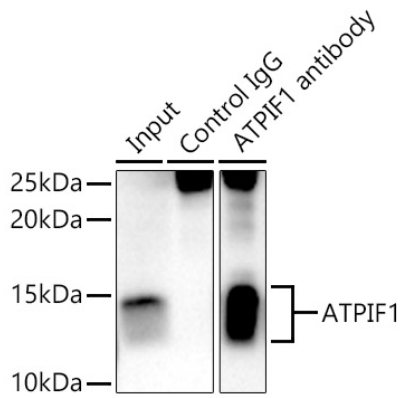
Affinity purification

Storage

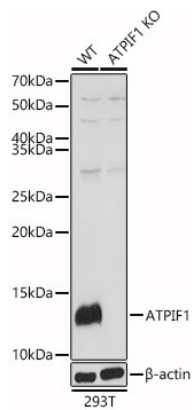
Store at -20°C. Avoid freeze / thaw cycles.

Buffer: PBS with 0.02% sodium azide, 50% glycerol, pH7.3.

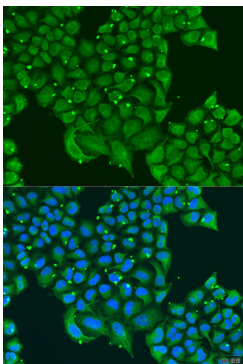
Validation Data



Immunoprecipitation analysis of 300 μ g extracts of K-562 cells using 3 μ g [KO Validated] ATPIF1 Rabbit pAb (A5099). Western blot was performed from the immunoprecipitate using [KO Validated] ATPIF1 Rabbit pAb (A5099) at a dilution of 1:3000.



Western blot analysis of lysates from wild type (WT) and ATPIF1 knockout (KO) 293T(KO) cells, using [KO Validated] ATPIF1 Rabbit pAb (A5099) at 1:1000 dilution. Secondary antibody: HRP Goat Anti-Rabbit IgG (H+L) (A5014) at 1:10000 dilution. Lysates/proteins: 25 μ g per lane. Blocking buffer: 3% nonfat dry milk in TBST. Detection: ECL Basic Kit (RM00020). Exposure time: 1s.



Immunofluorescence analysis of U2OS cells using [KO Validated] ATPIF1 Rabbit pAb (A5099) at dilution of 1:100. Secondary antibody: Cy3 Goat Anti-Rabbit IgG (H+L) (AS007) at 1:500 dilution. Blue: DAPI for nuclear staining.