

Cystathionase/CTH Rabbit mAb

Catalog No.: A5101 **Recombinant**

Basic Information

Observed MW

44kDa

Calculated MW

45kDa

Category

Primary antibody

Applications

ELISA, WB

Cross-Reactivity

Mouse, Rat

CloneNo number

ARC1200

Background

This gene encodes a cytoplasmic enzyme in the trans-sulfuration pathway that converts cystathione derived from methionine into cysteine. Glutathione synthesis in the liver is dependent upon the availability of cysteine. Mutations in this gene cause cystathioninuria. Alternative splicing of this gene results in three transcript variants encoding different isoforms.

Recommended Dilutions

WB 1:500 - 1:2000

Immunogen Information

Gene ID

1491

Swiss Prot

P32929

Immunogen

A synthetic peptide corresponding to a sequence within amino acids 1-100 of human Cystathionase/CTH (P32929).

Synonyms

CGL; CSE; Cystathionase/CTH

Contact

☎ | 400-999-6126

✉ | cn.market@abclonal.com.cn

🌐 | www.abclonal.com.cn

Product Information

Source

Rabbit

Isotype

IgG

Purification

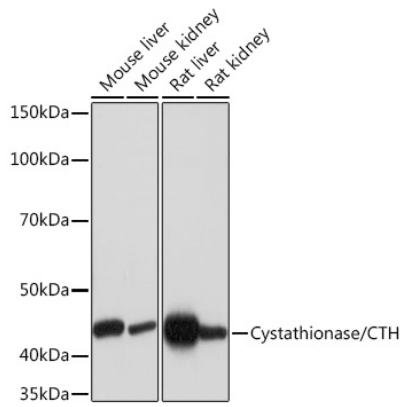
Affinity purification

Storage

Store at -20°C. Avoid freeze / thaw cycles.

Buffer: PBS with 0.02% sodium azide, 0.05% BSA, 50% glycerol, pH7.3.

Validation Data



Western blot analysis of extracts of various cell lines, using Cystathionase/CTH Rabbit mAb (A5101) at 1:1000 dilution.

Secondary antibody: HRP Goat Anti-Rabbit IgG (H+L) (AS014) at 1:10000 dilution.

Lysates/proteins: 25µg per lane.

Blocking buffer: 3% nonfat dry milk in TBST.

Detection: ECL Basic Kit (RM00020).

Exposure time: 3min.