

RUNX1/2/3 Rabbit mAb

Catalog No.: A5115 **Recombinant** **1 Publications**

Basic Information

Observed MW

45-55kDa

Calculated MW

51kDa

Category

Primary antibody

Applications

ELISA, WB

Cross-Reactivity

Human, Mouse

CloneNo number

ARC1162

Background

Core binding factor (CBF) is a heterodimeric transcription factor that binds to the core element of many enhancers and promoters. The protein encoded by this gene represents the alpha subunit of CBF and is thought to be involved in the development of normal hematopoiesis. Chromosomal translocations involving this gene are well-documented and have been associated with several types of leukemia. Three transcript variants encoding different isoforms have been found for this gene. [provided by RefSeq, Jul 2008]

Recommended Dilutions

WB 1:500 - 1:1000

Immunogen Information

Gene ID

861/864/860

Swiss Prot

Q01196/Q13761/Q13950

Immunogen

A synthetic peptide corresponding to a sequence within amino acids 354-453 of human RUNX1/2/3 (NP_001001890.1).

Synonyms

AML1; AML1-EVI-1; AMLCR1; CBF2alpha; CBFA2; EVI-1; PEBP2aB; PEBP2alpha; RUNX1/2/3

Contact

 | 400-999-6126

 | cn.market@abclonal.com.cn

 | www.abclonal.com.cn

Product Information

Source

Rabbit

Isotype

IgG

Purification

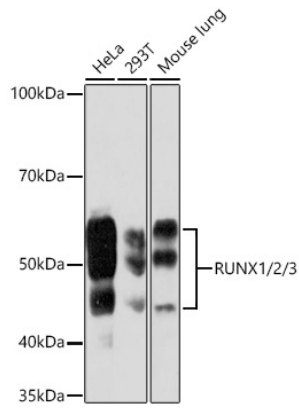
Affinity purification

Storage

Store at -20°C. Avoid freeze / thaw cycles.

Buffer: PBS with 0.02% sodium azide, 0.05% BSA, 50% glycerol, pH7.3.

Validation Data



Western blot analysis of various lysates using RUNX1/2/3 Rabbit mAb (A5115) at 1:1000 dilution.
Secondary antibody: HRP-conjugated Goat anti-Rabbit IgG (H+L) (AS014) at 1:10000 dilution.
Lysates/proteins: 25µg per lane.
Blocking buffer: 3% nonfat dry milk in TBST.
Detection: ECL Basic Kit (RM00020).
Exposure time: 90s.