

Contactin 2 Rabbit mAb

Catalog No.: A5137 **Recombinant**

Basic Information

Observed MW

150kDa

Calculated MW

113kDa

Category

Primary antibody

Applications

ELISA, WB

Cross-Reactivity

Human, Mouse, Rat

CloneNo number

ARC1984

Background

This gene encodes a member of the contactin family of proteins, part of the immunoglobulin superfamily of cell adhesion molecules. The encoded glycosylphosphatidylinositol (GPI)-anchored neuronal membrane protein plays a role in the proliferation, migration, and axon guidance of neurons of the developing cerebellum. A mutation in this gene may be associated with adult myoclonic epilepsy.

Recommended Dilutions

WB 1:500 - 1:1000

Immunogen Information

Gene ID

6900

Swiss Prot

Q02246

Immunogen

A synthetic peptide corresponding to a sequence within amino acids 1-100 of human Contactin 2 (Q02246).

Synonyms

AXT; TAX; TAX1; FAME5; TAG-1; Contactin 2

Contact

☎ | 400-999-6126

✉ | cn.market@abclonal.com.cn

🌐 | www.abclonal.com.cn

Product Information

Source

Rabbit

Isotype

IgG

Purification

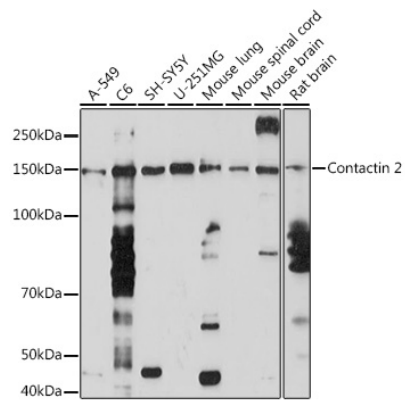
Affinity purification

Storage

Store at -20°C. Avoid freeze / thaw cycles.

Buffer: PBS with 0.02% sodium azide, 0.05% BSA, 50% glycerol, pH7.3.

Validation Data



Western blot analysis of extracts of various cell lines, using Contactin 2 Rabbit mAb (A5137) at 1:1000 dilution.

Secondary antibody: HRP Goat Anti-Rabbit IgG (H+L) (AS014) at 1:10000 dilution.

Lysates/proteins: 25µg per lane.

Blocking buffer: 3% nonfat dry milk in TBST.

Detection: ECL Basic Kit (RM00020).

Exposure time: 90s.