

KRT80 Rabbit pAb

Catalog No.: A5165

Basic Information

Observed MW

Refer to figures

Calculated MW

51kDa

Category

Primary antibody

Applications

ELISA,IF/ICC

Cross-Reactivity

Human, Mouse, Rat

Background

Keratins are intermediate filament proteins responsible for the structural integrity of epithelial cells and are subdivided into epithelial keratins and hair keratins. This gene's expression profile shows that it encodes a type II epithelial keratin, although structurally the encoded protein is more like a type II hair keratin. This protein is involved in cell differentiation, localizing near desmosomal plaques in earlier stages of differentiation but then dispersing throughout the cytoplasm in terminally differentiating cells. The type II keratins are clustered in a region of chromosome 12q13. Two transcript variants encoding two different fully functional isoforms have been found for this gene.

Recommended Dilutions

IF/ICC 1:50 - 1:200

Immunogen Information

Gene ID

144501

Swiss Prot

Q6KB66

Immunogen

Recombinant fusion protein containing a sequence corresponding to amino acids 242-452 of human KRT80 (NP_872313.2).

Synonyms

KB20; KRT80

Contact

☎ | 400-999-6126

✉ | cn.market@abclonal.com.cn

🌐 | www.abclonal.com.cn

Product Information

Source

Rabbit

Isotype

IgG

Purification

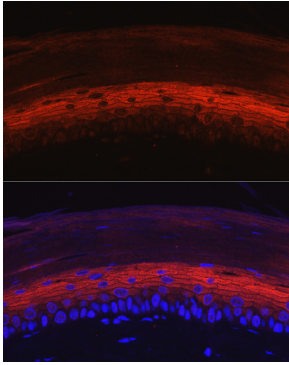
Affinity purification

Storage

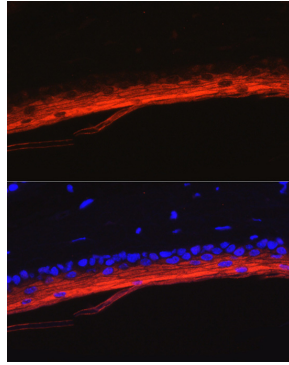
Store at -20°C. Avoid freeze / thaw cycles.

Buffer: PBS with 0.05% proclin300,50% glycerol,pH7.3.

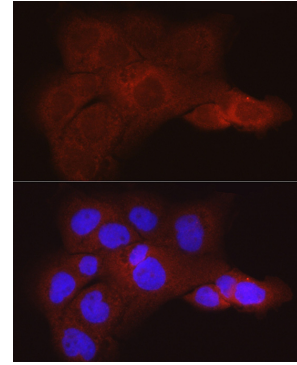
Validation Data



Immunofluorescence analysis of rat skin using KRT80 Rabbit pAb (A5165) at dilution of 1:50 (40x lens). Blue: DAPI for nuclear staining.



Immunofluorescence analysis of mouse skin using KRT80 Rabbit pAb (A5165) at dilution of 1:50 (40x lens). Blue: DAPI for nuclear staining.



Immunofluorescence analysis of A431 cells using KRT80 Rabbit pAb (A5165) at dilution of 1:50 (40x lens). Blue: DAPI for nuclear staining.