

Pannexin 1 Rabbit mAb

Catalog No.: A5167 **Recombinant**

Basic Information

Observed MW

50kDa

Calculated MW

48kDa

Category

Primary antibody

Applications

ELISA, WB, IHC-P

Cross-Reactivity

Human, Mouse, Rat

CloneNo number

ARC1207

Background

The protein encoded by this gene belongs to the innexin family. Innexin family members are the structural components of gap junctions. This protein and pannexin 2 are abundantly expressed in central nerve system (CNS) and are coexpressed in various neuronal populations. Studies in *Xenopus* oocytes suggest that this protein alone and in combination with pannexin 2 may form cell type-specific gap junctions with distinct properties.

Recommended Dilutions

WB 1:500 - 1:1000

IHC-P 1:50 - 1:200

Immunogen Information

Gene ID

24145

Swiss Prot

Q96RD7

Immunogen

A synthetic peptide corresponding to a sequence within amino acids 327-426 of human Pannexin 1 (Q96RD7).

Synonyms

PX1; MRS1; OOMD7; OZEMA7; UNQ2529; Pannexin 1

Contact

☎ | 400-999-6126

✉ | cn.market@abclonal.com.cn

🌐 | www.abclonal.com.cn

Product Information

Source

Rabbit

Isotype

IgG

Purification

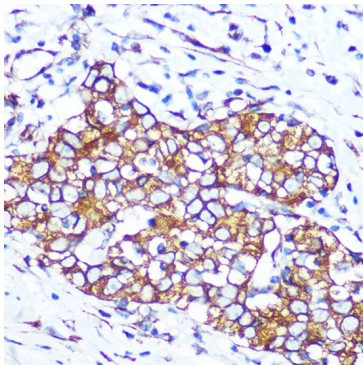
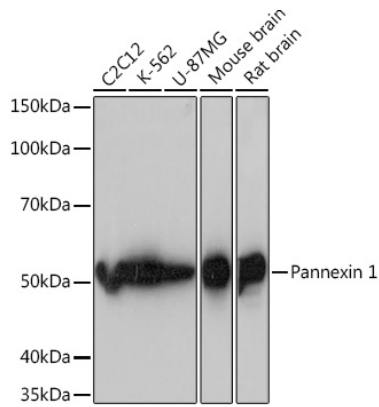
Affinity purification

Storage

Store at -20°C. Avoid freeze / thaw cycles.

Buffer: PBS with 0.02% sodium azide, 0.05% BSA, 50% glycerol, pH7.3.

Validation Data



Immunohistochemistry analysis of paraffin-embedded Human esophageal cancer using Pannexin 1 Rabbit mAb (A5167) at dilution of 1:100 (40x lens). Perform microwave antigen retrieval with 10 mM PBS buffer pH 7.2 before commencing with IHC staining protocol.