

RUVBL1/TIP49A/PONTIN Rabbit mAb

Catalog No.: A5180 **Recombinant**

Basic Information

Observed MW

51kDa

Calculated MW

50kDa

Category

Primary antibody

Applications

WB, IHC-P, (ELISA), CHIP

Cross-Reactivity

Human, Mouse, Rat

CloneNo number

ARC1247

Background

This gene encodes a protein that has both DNA-dependent ATPase and DNA helicase activities and belongs to the ATPases associated with diverse cellular activities (AAA+) protein family. The encoded protein associates with several multisubunit transcriptional complexes and with protein complexes involved in both ATP-dependent remodeling and histone modification. Alternate splicing results in multiple transcript variants.

Recommended Dilutions

WB 1:500 - 1:2000

IHC-P 1:50 - 1:200

ELISA Recommended starting concentration is 1 µg/mL. Please optimize the concentration based on your specific assay requirements.

ChIP 5µg antibody for 10µg-15µg of Chromatin

Contact

☎ | 400-999-6126

✉ | cn.market@abclonal.com.cn

🌐 | www.abclonal.com.cn

Immunogen Information

Gene ID

8607

Swiss Prot

Q9Y265

Immunogen

A synthetic peptide corresponding to a sequence within amino acids 350-456 of human RUVBL1/TIP49A/PONTIN (Q9Y265).

Synonyms

RVB1; TIH1; ECP54; TIP49; ECP-54; INO80H; NMP238; PONTIN; TIP49A; NMP 238; Pontin52; RUVBL1/TIP49A/PONTIN

Product Information

Source

Rabbit

Isotype

IgG

Purification

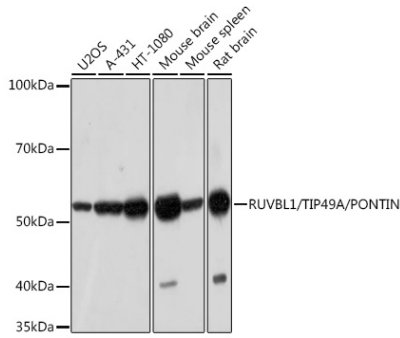
Affinity purification

Storage

Store at -20°C. Avoid freeze / thaw cycles.

Buffer: PBS with 0.02% sodium azide, 0.05% BSA, 50% glycerol, pH7.3.

Validation Data



Western blot analysis of various lysates using RUVBL1/TIP49A/PONTIN Rabbit mAb (A5180) at 1:1000 dilution.

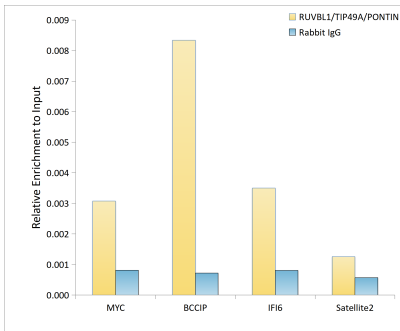
Secondary antibody: HRP-conjugated Goat anti-Rabbit IgG (H+L) (AS014) at 1:10000 dilution.

Lysates/proteins: 25µg per lane.

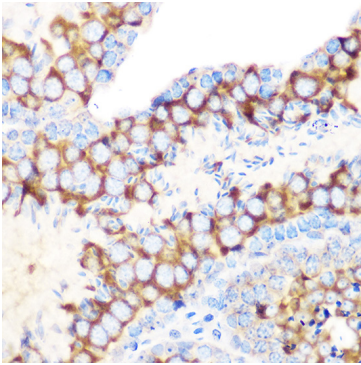
Blocking buffer: 3% nonfat dry milk in TBST.

Detection: ECL Basic Kit (RM00020).

Exposure time: 3min.



Chromatin immunoprecipitation analysis of extracts of HepG2 cells, using RUVBL1/TIP49A/PONTIN Rabbit mAb antibody (A5180) and rabbit IgG. The amount of immunoprecipitated DNA was checked by quantitative PCR. Histogram was constructed by the ratios of the immunoprecipitated DNA to the input.



Immunohistochemistry analysis of paraffin-embedded Mouse testis using RUVBL1/TIP49A/PONTIN Rabbit mAb (A5180) at dilution of 1:100 (40x lens). Microwave antigen retrieval performed with 0.01M Tris/EDTA Buffer (pH 9.0) prior to IHC staining.