

TEAD1 Rabbit mAb

Catalog No.: A5218 **Recombinant**

Basic Information

Observed MW

50kDa

Calculated MW

48kDa

Category

Primary antibody

Applications

WB,IP,(ELISA),ChIP,CUT&Tag

Cross-Reactivity

Human, Mouse, Rat

CloneNo number

ARC1157

Background

This gene encodes a ubiquitous transcriptional enhancer factor that is a member of the TEA/ATTS domain family. This protein directs the transactivation of a wide variety of genes and, in placental cells, also acts as a transcriptional repressor. Mutations in this gene cause Sveinsson's chorioretinal atrophy. Additional transcript variants have been described but their full-length natures have not been experimentally verified.

Recommended Dilutions

WB 1:500 - 1:2000**IP** 0.5µg-4µg antibody for
400µg-600µg extracts of
whole cells**ELISA** Recommended starting
concentration is 1 µg/mL.
Please optimize the
concentration based on
your specific assay
requirements.**ChIP** 5µg antibody for
10µg-15µg of Chromatin**CUT&Tag** 10⁵ cells /1 µg

Contact

 | 400-999-6126 | cn.market@abclonal.com.cn

Immunogen Information

Gene ID

7003

Swiss Prot

P28347

Immunogen

A synthetic peptide corresponding to a sequence within amino acids 1-100 of human TEAD1 (P28347).

Synonyms

AA; REF1; TCF13; TEF-1; NTEF-1; TCF-13; TEAD-1; TEAD1

Product Information

Source

Rabbit

Isotype

IgG

Purification

Affinity purification

Storage

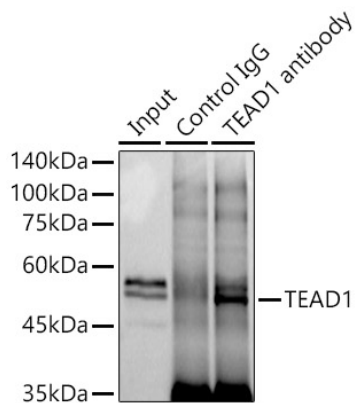
Store at -20°C. Avoid freeze / thaw cycles.

Buffer: PBS with 0.02% sodium azide,0.05% BSA,50% glycerol,pH7.3.

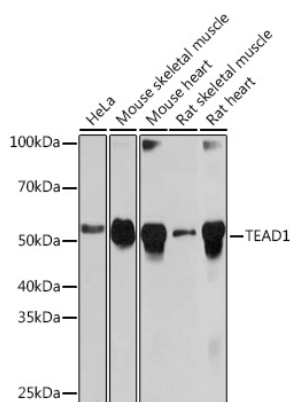


| www.abclonal.com.cn

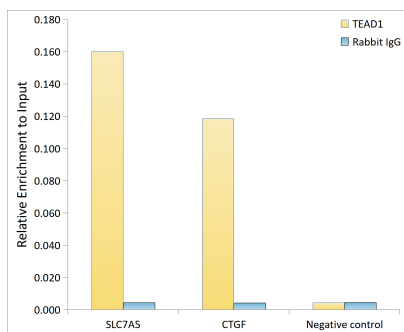
Validation Data



Immunoprecipitation analysis of 600 μ g extracts of Mouse skeletal muscle cells using 3 μ g TEAD1 antibody (A5218). Western blot was performed from the immunoprecipitate using TEAD1 antibody (A5218) at a dilution of 1:1000.

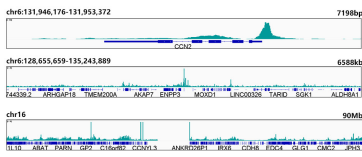


Western blot analysis of various lysates using TEAD1 Rabbit mAb (A5218) at 1:1000 dilution. Secondary antibody: HRP-conjugated Goat anti-Rabbit IgG (H+L) (AS014) at 1:10000 dilution. Lysates/proteins: 25 μ g per lane. Blocking buffer: 3% nonfat dry milk in TBST. Detection: ECL Basic Kit (RM00020). Exposure time: 10s.



Chromatin immunoprecipitation analysis of extracts of HepG2 cells, using TEAD1 antibody (A5218) and rabbit IgG. The amount of immunoprecipitated DNA was checked by quantitative PCR. Histogram was constructed by the ratios of the immunoprecipitated DNA to the input.

Validation Data



CUT&Tag was performed using the CUT&Tag Assay Kit (pAG-Tn5) for Illumina(RK20265) from 10^5 Hep G2 cells with 1 μ g TEAD1 Rabbit mAb (A5218), along with a Goat Anti-Rabbit IgG(H+L). The CUT&Tag results indicate the enrichment pattern of TEAD1 in representative gene loci (SLC7A5), as shown in figure.