

DLDH/DLD Rabbit mAb

Catalog No.: A5220 **Recombinant** **2 Publications**

Basic Information

Observed MW

60kDa

Calculated MW

54kDa

Category

Primary antibody

Applications

ELISA, WB, IHC-P, IF/ICC

Cross-Reactivity

Human, Mouse, Rat

CloneNo number

ARC1224

Background

This gene encodes a member of the class-I pyridine nucleotide-disulfide oxidoreductase family. The encoded protein has been identified as a moonlighting protein based on its ability to perform mechanistically distinct functions. In homodimeric form, the encoded protein functions as a dehydrogenase and is found in several multi-enzyme complexes that regulate energy metabolism. However, as a monomer, this protein can function as a protease. Mutations in this gene have been identified in patients with E3-deficient maple syrup urine disease and lipoamide dehydrogenase deficiency. Alternative splicing results in multiple transcript variants.

Recommended Dilutions

WB	1:500 - 1:1000
IHC-P	1:50 - 1:200
IF/ICC	1:50 - 1:200

Immunogen Information

Gene ID

1738

Swiss Prot

P09622

Immunogen

Recombinant fusion protein containing a sequence corresponding to amino acids 401-500 of human DLDH/DLD (P09622).

Synonyms

E3; LAD; DLDD; DLDH; GCSL; PHE3; OGDC-E3; DLDH/DLD

Contact

☎ | 400-999-6126

✉ | cn.market@abclonal.com.cn

🌐 | www.abclonal.com.cn

Product Information

Source

Rabbit

Isotype

IgG

Purification

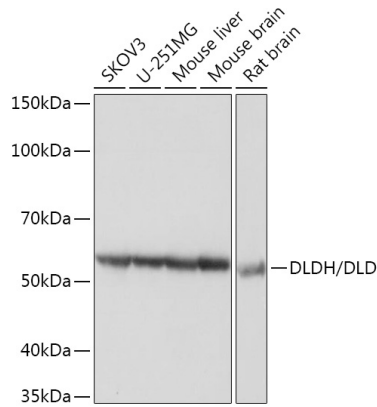
Affinity purification

Storage

Store at -20°C. Avoid freeze / thaw cycles.

Buffer: PBS with 0.02% sodium azide, 0.05% BSA, 50% glycerol, pH7.3.

Validation Data



Western blot analysis of extracts of various cell lines, using DLDH/DLD Rabbit mAb (A5220) at 1:3000 dilution.

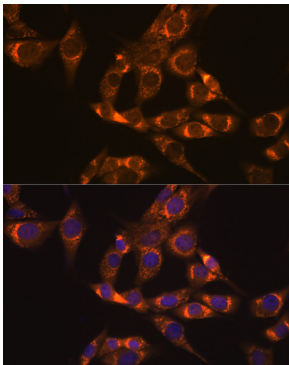
Secondary antibody: HRP Goat Anti-Rabbit IgG (H+L) (AS014) at 1:10000 dilution.

Lysates/proteins: 25µg per lane.

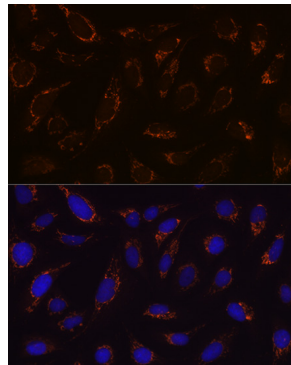
Blocking buffer: 3% nonfat dry milk in TBST.

Detection: ECL Basic Kit (RM00020).

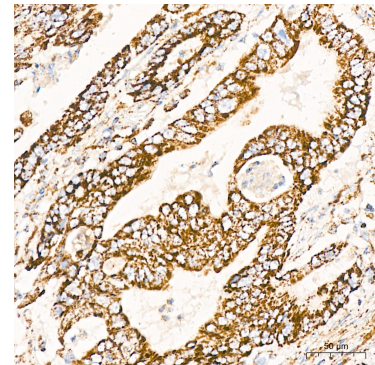
Exposure time: 1s.



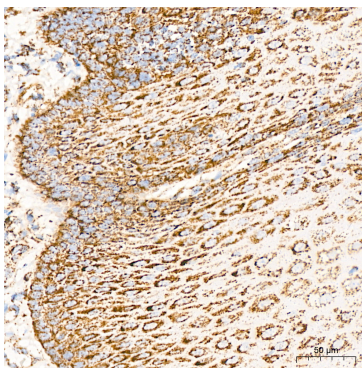
Immunofluorescence analysis of NIH-3T3 cells using DLDH/DLD Rabbit mAb (A5220) at dilution of 1:100 (40x lens). Blue: DAPI for nuclear staining.



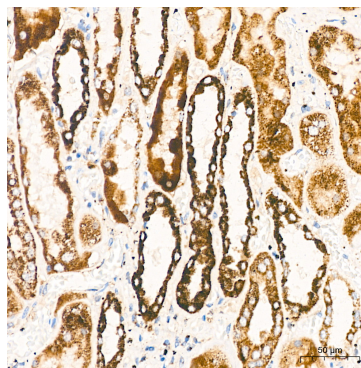
Immunofluorescence analysis of U-2 OS cells using DLDH/DLD Rabbit mAb (A5220) at dilution of 1:100 (40x lens). Blue: DAPI for nuclear staining.



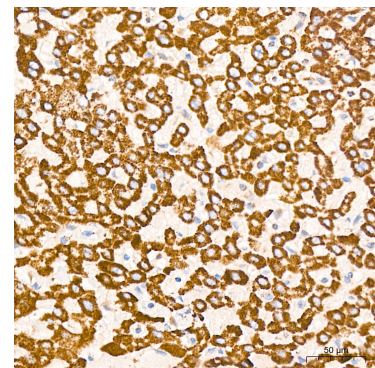
Immunohistochemistry analysis of DLDH/DLD in paraffin-embedded human colon carcinoma tissue using DLDH/DLD Rabbit mAb (A5220) at a dilution of 1:200 (40x lens). High pressure antigen retrieval was performed with 0.01 M citrate buffer (pH 6.0) prior to IHC staining.



Immunohistochemistry analysis of DLDH/DLD in paraffin-embedded human esophagus tissue using DLDH/DLD Rabbit mAb (A5220) at a dilution of 1:200 (40x lens). High pressure antigen retrieval was performed with 0.01 M citrate buffer (pH 6.0) prior to IHC staining.

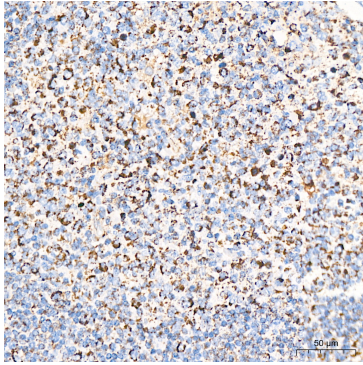


Immunohistochemistry analysis of DLDH/DLD in paraffin-embedded human kidney tissue using DLDH/DLD Rabbit mAb (A5220) at a dilution of 1:200 (40x lens). High pressure antigen retrieval was performed with 0.01 M citrate buffer (pH 6.0) prior to IHC staining.

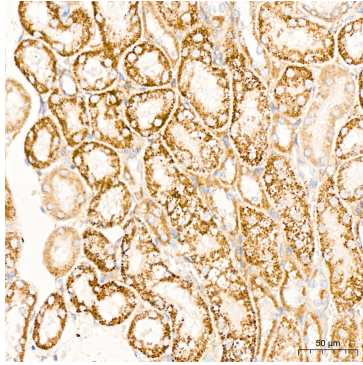


Immunohistochemistry analysis of DLDH/DLD in paraffin-embedded human liver tissue using DLDH/DLD Rabbit mAb (A5220) at a dilution of 1:200 (40x lens). High pressure antigen retrieval was performed with 0.01 M citrate buffer (pH 6.0) prior to IHC staining.

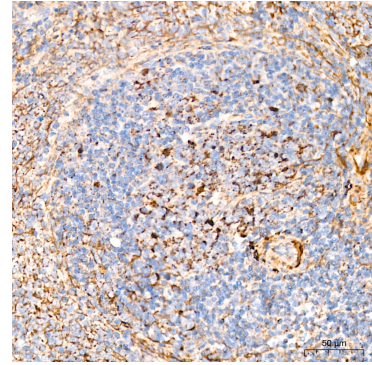
Validation Data



Immunohistochemistry analysis of DLDH/DLD in paraffin-embedded human tonsil tissue using DLDH/DLD Rabbit mAb (A5220) at a dilution of 1:200 (40x lens). High pressure antigen retrieval was performed with 0.01 M citrate buffer (pH 6.0) prior to IHC staining.



Immunohistochemistry analysis of DLDH/DLD in paraffin-embedded mouse kidney tissue using DLDH/DLD Rabbit mAb (A5220) at a dilution of 1:200 (40x lens). High pressure antigen retrieval was performed with 0.01 M citrate buffer (pH 6.0) prior to IHC staining.



Immunohistochemistry analysis of DLDH/DLD in paraffin-embedded rat spleen tissue using DLDH/DLD Rabbit mAb (A5220) at a dilution of 1:200 (40x lens). High pressure antigen retrieval was performed with 0.01 M citrate buffer (pH 6.0) prior to IHC staining.