

ANGPTL3 Rabbit mAb

Catalog No.: A5225 **Recombinant** **1 Publications**

Basic Information

Observed MW

62kDa

Calculated MW

54kDa

Category

Primary antibody

Applications

WB,IF-P,IHC-P,ELISA

Cross-Reactivity

Human, Mouse, Rat

CloneNo number

ARC1214

Background

This gene encodes a member of a family of secreted proteins that function in angiogenesis. The encoded protein, which is expressed predominantly in the liver, is further processed into an N-terminal coiled-coil domain-containing chain and a C-terminal fibrinogen chain. The N-terminal chain is important for lipid metabolism, while the C-terminal chain may be involved in angiogenesis. Mutations in this gene cause familial hypobetalipoproteinemia type 2.

Recommended Dilutions

WB	1:1000 - 1:2000
IF-P	1:200 - 1:800
IHC-P	1:100 - 1:1000
ELISA	Recommended starting concentration is 1 µg/mL. Please optimize the concentration based on your specific assay requirements.

Contact

☎	400-999-6126
✉	cn.market@abclonal.com.cn
🌐	www.abclonal.com.cn

Immunogen Information

Gene ID

27329

Swiss Prot

Q9Y5C1

Immunogen

Synthetic peptide. This information is considered to be commercially sensitive.

Synonyms

ANL3; ANG-5; FHBL2; ANGPT5; ANGPTL3

Product Information

Source

Rabbit

Isotype

IgG

Purification

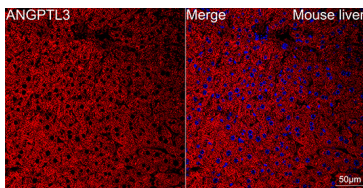
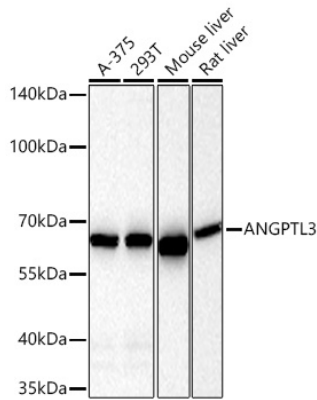
Affinity purification

Storage

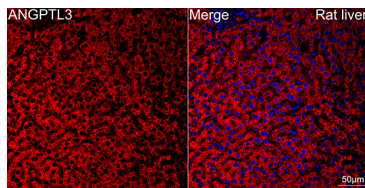
Store at -20°C. Avoid freeze / thaw cycles.

Buffer: PBS containing 50% glycerol and 0.05% BSA, preserved with proclin300 or sodium azide (as specified on the Certificate of Analysis), pH 7.3.

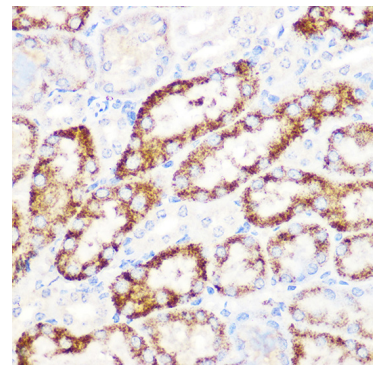
Validation Data



Confocal imaging of paraffin-embedded Mouse liver using ANGPTL3 Rabbit mAb (A5225, dilution 1:200) followed by a further incubation with Cy3 Goat Anti-Rabbit IgG (H+L) (AS007, dilution 1:500) (Red). DAPI was used for nuclear staining (Blue). Objective: 40x. Perform high pressure antigen retrieval with 0.01 M citrate buffer (pH 6.0) prior to IF staining.



Confocal imaging of paraffin-embedded Rat liver using ANGPTL3 Rabbit mAb (A5225, dilution 1:200) followed by a further incubation with Cy3 Goat Anti-Rabbit IgG (H+L) (AS007, dilution 1:500) (Red). DAPI was used for nuclear staining (Blue). Objective: 40x. Perform high pressure antigen retrieval with 0.01 M citrate buffer (pH 6.0) prior to IF staining.



Immunohistochemistry analysis of paraffin-embedded Mouse kidney using ANGPTL3 Rabbit mAb (A5225) at dilution of 1:100 (40x lens). Microwave antigen retrieval performed with 0.01M Tris/EDTA Buffer (pH 9.0) prior to IHC staining.