

ESE1/ELF3 Rabbit mAb

Catalog No.: A5236 **Recombinant** **1 Publications**

Basic Information

Observed MW

42kDa

Calculated MW

41kDa

Category

Primary antibody

Applications

WB,ELISA,ChIP,CUT&Tag

Cross-Reactivity

Human, Mouse, Rat

CloneNo number

ARC1191

Background

Enables DNA-binding transcription activator activity, RNA polymerase II-specific and sequence-specific double-stranded DNA binding activity. Involved in inflammatory response; negative regulation of transcription, DNA-templated; and positive regulation of transcription by RNA polymerase II. Located in Golgi apparatus; cytosol; and nucleoplasm.

Recommended Dilutions

WB 1:1000 - 1:6000

ELISA Recommended starting concentration is 1 µg/mL. Please optimize the concentration based on your specific assay requirements.


ChIP 5µg antibody for 10µg-15µg of Chromatin

CUT&Tag 10⁵ cells /1 µg

Contact

 | 400-999-6126

 | cn.market@abclonal.com.cn

 | www.abclonal.com.cn

Immunogen Information

Gene ID

1999

Swiss Prot

P78545

Immunogen

Recombinant fusion protein containing a sequence corresponding to amino acids 1-371 of human ESE1/ELF3 (P78545).

Synonyms

ERT; ESX; EPR-1; ESE-1; ESE1/ELF3

Product Information

Source

Rabbit

Isotype

IgG

Purification

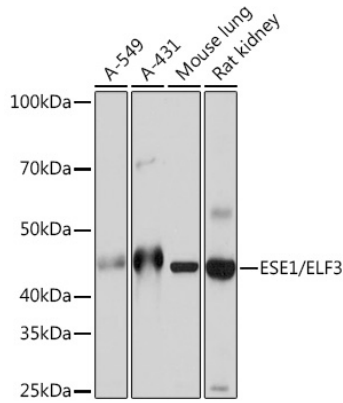
Affinity purification

Storage

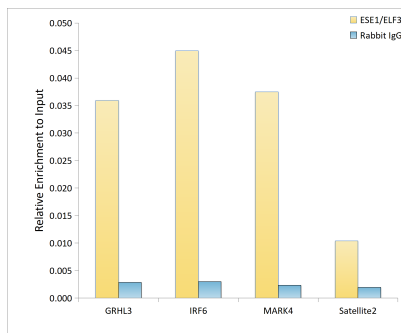
Store at -20°C. Avoid freeze / thaw cycles.

Buffer: PBS with 0.02% sodium azide,0.05% BSA,50% glycerol,pH7.3.

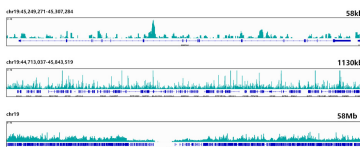
Validation Data



Western blot analysis of various lysates using ESE1/ELF3 Rabbit mAb (A5236) at 1:1000 dilution. Secondary antibody: HRP-conjugated Goat anti-Rabbit IgG (H+L) (AS014) at 1:10000 dilution. Lysates/proteins: 25µg per lane. Blocking buffer: 3% nonfat dry milk in TBST. Detection: ECL Basic Kit (RM00020). Exposure time: 10s.



Chromatin immunoprecipitation analysis of extracts of HepG2 cells, using ESE1/ELF3 antibody (A5236) and rabbit IgG. The amount of immunoprecipitated DNA was checked by quantitative PCR. Histogram was constructed by the ratios of the immunoprecipitated DNA to the input.



CUT&Tag was performed using the CUT&Tag Assay Kit (pAG-Tn5) for Illumina(RK20265) from 10^5 HepG5 with 1µg ESE1 (A5236), along with a Goat Anti-Rabbit IgG(H+L). The CUT&Tag results indicate the enrichment pattern of ESE1 in representative gene loci (MARK4), as shown in figure.