

GTF2H2C Rabbit pAb

Catalog No.: A5239

Basic Information

Observed MW

44kDa

Calculated MW

44kDa

Category

Primary antibody

Applications

ELISA, WB, IHC-P

Cross-Reactivity

Human, Rat

Background

Predicted to enable zinc ion binding activity. Predicted to be involved in nucleotide-excision repair and regulation of transcription by RNA polymerase II. Located in nuclear speck.

Recommended Dilutions

WB	1:200 - 1:2000
IHC-P	1:50 - 1:200

Immunogen Information

Gene ID

728340

Swiss Prot

Q6P1K8

Immunogen

Recombinant fusion protein containing a sequence corresponding to amino acids 1-300 of human GTF2H2C (NP_001092198.1).

Synonyms

GTF2H2C_2; GTF2H2C

Contact

 | 400-999-6126

 | cn.market@abclonal.com.cn

 | www.abclonal.com.cn

Product Information

Source

Rabbit

Isotype

IgG

Purification

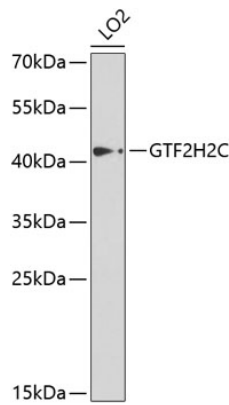
Affinity purification

Storage

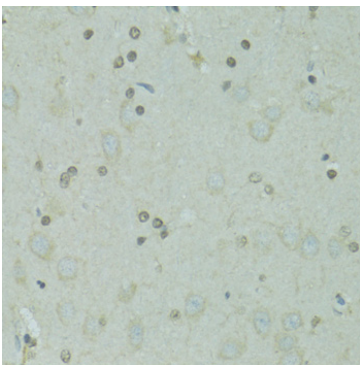
Store at -20°C. Avoid freeze / thaw cycles.

Buffer: PBS with 0.02% sodium azide, 50% glycerol, pH7.3.

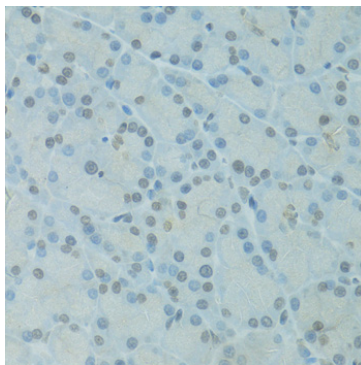
Validation Data



Western blot analysis of lysates from LO2 cells, using GTF2H2C Rabbit pAb (A5239) at 1:1000 dilution.
Secondary antibody: HRP Goat Anti-Rabbit IgG (H+L) (AS014) at 1:10000 dilution.
Lysates/proteins: 25µg per lane.
Blocking buffer: 3% nonfat dry milk in TBST.
Detection: ECL Enhanced Kit (RM00021).
Exposure time: 5s.



Immunohistochemistry analysis of paraffin-embedded Rat brain using GTF2H2C Rabbit pAb (A5239) at dilution of 1:100 (40x lens). Perform microwave antigen retrieval with 10 mM PBS buffer pH 7.2 before commencing with IHC staining protocol.



Immunohistochemistry analysis of paraffin-embedded Rat pancreas using GTF2H2C Rabbit pAb (A5239) at dilution of 1:100 (40x lens). Perform microwave antigen retrieval with 10 mM PBS buffer pH 7.2 before commencing with IHC staining protocol.