

# MT-ND1 Rabbit pAb

Catalog No.: A5250 **8 Publications**

## Basic Information

### Observed MW

36kDa

### Calculated MW

36kDa

### Category

Primary antibody

### Applications

ELISA, WB

### Cross-Reactivity

Human, Mouse

## Background

Predicted to enable triplet codon-amino acid adaptor activity. Predicted to act upstream of or within translation. Predicted to be located in mitochondrion. Orthologous to human MT-TI (mitochondrially encoded tRNA-Ile (AUU/C)).

## Recommended Dilutions

WB 1:500 - 1:1000

## Immunogen Information

### Gene ID

17733

### Swiss Prot

P03888

### Immunogen

A synthetic peptide corresponding to a sequence within amino acids 1-100 of mouse MT-ND1 (NP\_904328.1).

### Synonyms

Trnl; MT-ND1

## Contact

 | 400-999-6126

 | [cn.market@abclonal.com.cn](mailto:cn.market@abclonal.com.cn)

 | [www.abclonal.com.cn](http://www.abclonal.com.cn)

## Product Information

### Source

Rabbit

### Isotype

IgG

### Purification

Affinity purification

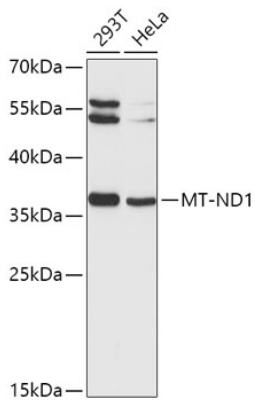
### Storage

Store at -20°C. Avoid freeze / thaw cycles.

Buffer: PBS with 0.02% sodium azide, 50% glycerol, pH 7.3.

## Validation Data

---



Western blot analysis of various lysates using MT-ND1 Rabbit pAb (A5250) at 1:1000 dilution.  
Secondary antibody: HRP Goat Anti-Rabbit IgG (H+L) (AS014) at 1:10000 dilution.  
Lysates/proteins: 25µg per lane.  
Blocking buffer: 3% nonfat dry milk in TBST.  
Detection: ECL Basic Kit (RM00020).  
Exposure time: 5s.