

# RRM2 Rabbit pAb

Catalog No.: A5255

4 Publications

## Basic Information

### Observed MW

45kDa

### Calculated MW

45kDa

### Category

Primary antibody

### Applications

WB, IHC-P, IF/ICC, IP, ELISA

### Cross-Reactivity

Human, Mouse, Rat

## Background

This gene encodes one of two non-identical subunits for ribonucleotide reductase. This reductase catalyzes the formation of deoxyribonucleotides from ribonucleotides. Synthesis of the encoded protein (M2) is regulated in a cell-cycle dependent fashion. Transcription from this gene can initiate from alternative promoters, which results in two isoforms that differ in the lengths of their N-termini. Related pseudogenes have been identified on chromosomes 1 and X.

## Recommended Dilutions

<b>WB</b>	1:500 - 1:1000
-----------	----------------

<b>IHC-P</b>	1:50 - 1:200
--------------	--------------

<b>IF/ICC</b>	1:50 - 1:200
---------------	--------------

<b>IP</b>	0.5µg-4µg antibody for 200µg-400µg extracts of whole cells
-----------	--

<b>ELISA</b>	Recommended starting concentration is 1 µg/mL. Please optimize the concentration based on your specific assay requirements.
--------------	--

## Immunogen Information

### Gene ID

6241

### Swiss Prot

P31350

### Immunogen

Recombinant fusion protein containing a sequence corresponding to amino acids 1-389 of human RRM2 (NP\_001025.1).

### Synonyms

R2; RR2; RR2M; C2orf48; RRM2

## Contact

		400-999-6126
--	--	--------------

		<a href="mailto:cn.market@abclonal.com.cn">cn.market@abclonal.com.cn</a>
--	--	--

		<a href="http://www.abclonal.com.cn">www.abclonal.com.cn</a>
--	--	--

## Product Information

### Source

Rabbit

### Isotype

IgG

### Purification

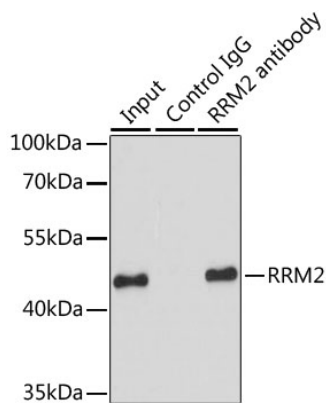
Affinity purification

### Storage

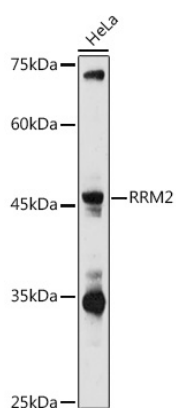
Store at -20°C. Avoid freeze / thaw cycles.

Buffer: PBS with 0.02% sodium azide, 50% glycerol, pH 7.3.

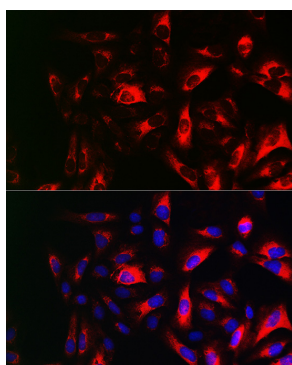
## Validation Data



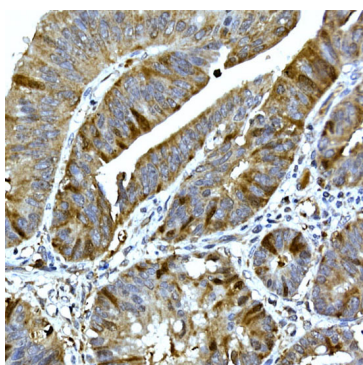
Immunoprecipitation analysis of 200 µg extracts of HeLa cells using 1 µg RRM2 antibody (A5255). Western blot was performed from the immunoprecipitate using RRM2 antibody (A5255) at a dilution of 1:1000.



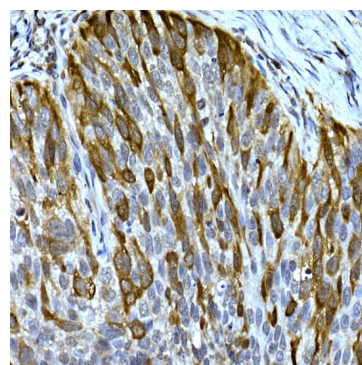
Western blot analysis of lysates from HeLa cells, using RRM2 Rabbit pAb (A5255) at 1:1000 dilution. Secondary antibody: HRP-conjugated Goat anti-Rabbit IgG (H+L) (AS014) at 1:10000 dilution. Lysates/proteins: 25µg per lane. Blocking buffer: 3% nonfat dry milk in TBST. Detection: ECL Basic Kit (RM00020). Exposure time: 180s.



Immunofluorescence analysis of U2OS cells using RRM2 Rabbit pAb (A5255) at dilution of 1:100 (40x lens). Secondary antibody: Cy3-conjugated Goat anti-Rabbit IgG (H+L) (AS007) at 1:500 dilution. Blue: DAPI for nuclear staining.



Immunohistochemistry analysis of paraffin-embedded Human colon carcinoma using RRM2 Rabbit pAb (A5255) at dilution of 1:100 (40x lens). High pressure antigen retrieval performed with 0.01M Citrate Bufferr (pH 6.0) prior to IHC staining.



Immunohistochemistry analysis of paraffin-embedded Human lung cancer using RRM2 Rabbit pAb (A5255) at dilution of 1:100 (40x lens). High pressure antigen retrieval performed with 0.01M Citrate Bufferr (pH 6.0) prior to IHC staining.