

# C1QB Rabbit pAb

Catalog No.: A5339 **2 Publications**

## Basic Information

### Observed MW

30kDa

### Calculated MW

27kDa

### Category

Primary antibody

### Applications

ELISA, WB

### Cross-Reactivity

Human, Mouse

## Background

This gene encodes the B-chain polypeptide of serum complement subcomponent C1q, which associates with C1r and C1s to yield the first component of the serum complement system. C1q is composed of 18 polypeptide chains which include 6 A-chains, 6 B-chains, and 6 C-chains. Each chain contains an N-terminal collagen-like region and a C-terminal C1q globular domain. C1q deficiency is associated with lupus erythematosus and glomerulonephritis.

## Recommended Dilutions

WB 1:500 - 1:2000

## Immunogen Information

### Gene ID

713

### Swiss Prot

P02746

### Immunogen

Recombinant fusion protein containing a sequence corresponding to amino acids 104-253 of human C1QB (NP\_000482.3).

### Synonyms

C1QD2; C1QB

## Contact

 | 400-999-6126

 | [cn.market@abclonal.com.cn](mailto:cn.market@abclonal.com.cn)

 | [www.abclonal.com.cn](http://www.abclonal.com.cn)

## Product Information

### Source

Rabbit

### Isotype

IgG

### Purification

Affinity purification

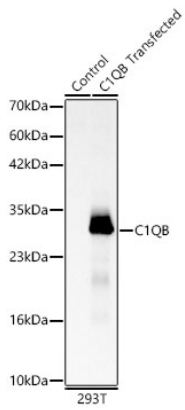
### Storage

Store at -20°C. Avoid freeze / thaw cycles.

Buffer: PBS with 0.02% sodium azide, 50% glycerol, pH7.3.

## Validation Data

---



Western blot analysis of lysates from wild type (WT) and 293T cells transfected with C1QB using C1QB Rabbit pAb(A5339) at 1:1000 dilution.  
Secondary antibody:HRP Goat Anti-Rabbit IgG (H+L)(AS014) at 1:10000 dilution.  
Lysates/proteins: 25 µg per lane.  
Blocking buffer: 3% nonfat dry milk in TBST.  
Detection:ECL Basic Kit (RM00020).  
Exposure time: 5s.