

TCEB2 Rabbit pAb

Catalog No.: A5362

Basic Information

Observed MW

18kDa

Calculated MW

13kDa

Category

Primary antibody

Applications

ELISA,WB,IP

Cross-Reactivity

Human, Mouse

Background

This gene encodes the protein elongin B, which is a subunit of the transcription factor B (SIII) complex. The SIII complex is composed of elongins A/A2, B and C. It activates elongation by RNA polymerase II by suppressing transient pausing of the polymerase at many sites within transcription units. Elongin A functions as the transcriptionally active component of the SIII complex, whereas elongins B and C are regulatory subunits. Elongin A2 is specifically expressed in the testis, and capable of forming a stable complex with elongins B and C. The von Hippel-Lindau tumor suppressor protein binds to elongins B and C, and thereby inhibits transcription elongation. Two alternatively spliced transcript variants encoding different isoforms have been described for this gene. Pseudogenes have been identified on chromosomes 11 and 13.

Recommended Dilutions

WB 1:500 - 1:2000**IP** 0.5µg-4µg antibody for
200µg-400µg extracts of
whole cells

Immunogen Information

Gene ID

6923

Swiss Prot

Q15370

Immunogen

Recombinant fusion protein containing a sequence corresponding to amino acids 1-118 of human TCEB2 (NP_009039.1).

Synonyms

SIII; TCEB2

Contact

 | 400-999-6126 | cn.market@abclonal.com.cn | www.abclonal.com.cn

Product Information

Source

Rabbit

Isotype

IgG

Purification

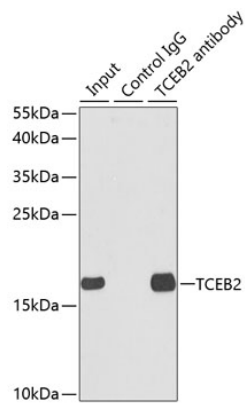
Affinity purification

Storage

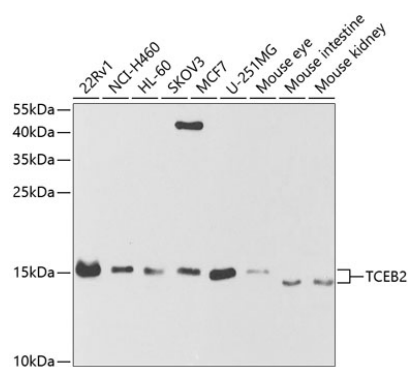
Store at -20°C. Avoid freeze / thaw cycles.

Buffer: PBS with 0.02% sodium azide,50% glycerol,pH7.3.

Validation Data



Immunoprecipitation analysis of 150 µg extracts of MCF7 cells using 3 µg TCEB2 antibody (A5362). Western blot was performed from the immunoprecipitate using TCEB2 antibody (A5362) at a dilution of 1:500.



Western blot analysis of various lysates using TCEB2 Rabbit pAb (A5362) at 1:1000 dilution. Secondary antibody: HRP Goat Anti-Rabbit IgG (H+L) (A5014) at 1:10000 dilution. Lysates/proteins: 25µg per lane. Blocking buffer: 3% nonfat dry milk in TBST. Detection: ECL Basic Kit (RM00020). Exposure time: 90s.