

# Zinc- $\alpha$ 2-glycoprotein (ZAG/AZGP1) Rabbit pAb

Catalog No.: A5365 **1 Publications**

## Basic Information

### Observed MW

41kDa

### Calculated MW

34kDa

### Category

Primary antibody

### Applications

ELISA, WB

### Cross-Reactivity

Human, Mouse

## Background

Involved in cell adhesion and detection of chemical stimulus involved in sensory perception of bitter taste. Located in extracellular space.

## Recommended Dilutions

WB 1:500 - 1:2000

## Immunogen Information

### Gene ID

563

### Swiss Prot

P25311

### Immunogen

Recombinant fusion protein containing a sequence corresponding to amino acids 21-298 of human Zinc- $\alpha$ 2-glycoprotein (ZAG/Zinc- $\alpha$ 2-glycoprotein (ZAG/AZGP1)) (NP\_001176.1).

### Synonyms

ZAG; ZA2G; Zinc- $\alpha$ 2-glycoprotein (ZAG/AZGP1)

## Contact

 | 400-999-6126

 | [cn.market@abclonal.com.cn](mailto:cn.market@abclonal.com.cn)

 | [www.abclonal.com.cn](http://www.abclonal.com.cn)

## Product Information

### Source

Rabbit

### Isotype

IgG

### Purification

Affinity purification

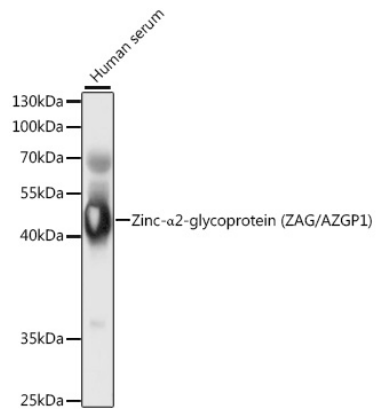
### Storage

Store at -20°C. Avoid freeze / thaw cycles.

Buffer: PBS with 0.02% sodium azide, 50% glycerol, pH7.3.

## Validation Data

---



Western blot analysis of extracts of human serum, using Zinc- $\alpha$ 2-glycoprotein (ZAG/Zinc- $\alpha$ 2-glycoprotein (ZAG/AZGP1)) antibody (A5365) at 1:1000 dilution.

Secondary antibody: HRP Goat Anti-Rabbit IgG (H+L) (AS014) at 1:10000 dilution.

Lysates/proteins: 25 $\mu$ g per lane.

Blocking buffer: 3% nonfat dry milk in TBST.

Detection: ECL Basic Kit (RM00020).

Exposure time: 1s.