

# CUL5 Rabbit pAb

Catalog No.: A5369

3 Publications

## Basic Information

### Observed MW

91kDa

### Calculated MW

91kDa

### Category

Primary antibody

### Applications

ELISA, WB

### Cross-Reactivity

Human, Mouse, Rat

## Background

Enables ubiquitin protein ligase binding activity. Predicted to be involved in SCF-dependent proteasomal ubiquitin-dependent protein catabolic process and protein ubiquitination. Predicted to act upstream of or within cerebral cortex radially oriented cell migration and radial glia guided migration of Purkinje cell. Located in site of DNA damage. Part of Cul5-RING ubiquitin ligase complex.

## Recommended Dilutions

WB 1:1000 - 1:5000

## Immunogen Information

### Gene ID

8065

### Swiss Prot

Q93034

### Immunogen

Recombinant fusion protein containing a sequence corresponding to amino acids 1-300 of human CUL5 (NP\_003469.2).

### Synonyms

CUL-5; VACM1; VACM-1; CUL5

## Contact

☎ | 400-999-6126

✉ | [cn.market@abclonal.com.cn](mailto:cn.market@abclonal.com.cn)

🌐 | [www.abclonal.com.cn](http://www.abclonal.com.cn)

## Product Information

### Source

Rabbit

### Isotype

IgG

### Purification

Affinity purification

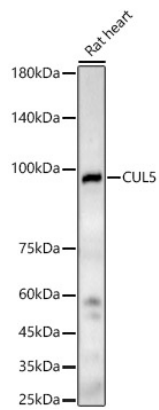
### Storage

Store at -20°C. Avoid freeze / thaw cycles.

Buffer: PBS with 0.02% sodium azide, 50% glycerol, pH7.3.

## Validation Data

---



Western blot analysis of lysates from Rat heart, using CUL5 Rabbit pAb (A5369) at 1:2000 dilution.  
Secondary antibody: HRP Goat Anti-Rabbit IgG (H+L) (AS014) at 1:10000 dilution.  
Lysates/proteins: 25µg per lane.  
Blocking buffer: 3% nonfat dry milk in TBST.  
Detection: ECL Basic Kit (RM00020).  
Exposure time: 180s.