

# Rad18 Rabbit pAb

Catalog No.: A5380 **1 Publications**

## Basic Information

### Observed MW

80kDa

### Calculated MW

56kDa

### Category

Primary antibody

### Applications

ELISA, WB

### Cross-Reactivity

Human

## Background

The protein encoded by this gene is highly similar to *S. cerevisiae* DNA damage repair protein Rad18. Yeast Rad18 functions through its interaction with Rad6, which is an ubiquitin-conjugating enzyme required for post-replication repair of damaged DNA. Similar to its yeast counterpart, this protein is able to interact with the human homolog of yeast Rad6 protein through a conserved ring-finger motif. Mutation of this motif results in defective replication of UV-damaged DNA and hypersensitivity to multiple mutagens.

## Recommended Dilutions

WB 1:500 - 1:2000

## Immunogen Information

### Gene ID

56852

### Swiss Prot

Q9NS91

### Immunogen

Recombinant fusion protein containing a sequence corresponding to amino acids 216-495 of human Rad18 (NP\_064550.3).

### Synonyms

RNF73; Rad18

## Contact

 | 400-999-6126

 | [cn.market@abclonal.com.cn](mailto:cn.market@abclonal.com.cn)

 | [www.abclonal.com.cn](http://www.abclonal.com.cn)

## Product Information

### Source

Rabbit

### Isotype

IgG

### Purification

Affinity purification

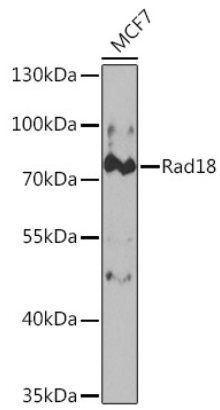
### Storage

Store at -20°C. Avoid freeze / thaw cycles.

Buffer: PBS with 0.02% sodium azide, 50% glycerol, pH 7.3.

## Validation Data

---



Western blot analysis of extracts of MCF7 cells, using Rad18 Rabbit pAb (A5380) at 1:1000 dilution.  
Secondary antibody: HRP Goat Anti-Rabbit IgG (H+L) (AS014) at 1:10000 dilution.  
Lysates/proteins: 25µg per lane.  
Blocking buffer: 3% nonfat dry milk in TBST.  
Detection: ECL Basic Kit (RM00020).