

LGI1 Rabbit pAb

Catalog No.: A5408

Basic Information

Observed MW

64kDa

Calculated MW

64kDa

Category

Primary antibody

Applications

ELISA, WB

Cross-Reactivity

Human, Mouse, Rat

Background

This gene encodes a member of the secreted leucine-rich repeat (LRR) superfamily and shares homology with members of the SLIT protein family. The encoded protein may regulate the activity of voltage-gated potassium channels and may be involved in neuronal growth regulation and cell survival. This gene is rearranged as a result of translocations in glioblastoma cell lines, and it is frequently down-regulated or rearranged in malignant gliomas. Mutations in this gene result in autosomal dominant lateral temporal epilepsy. Alternative splicing results in multiple transcript variants.

Recommended Dilutions

WB 1:500 - 1:2000

Immunogen Information

Gene ID

9211

Swiss Prot

O95970

Immunogen

Recombinant fusion protein containing a sequence corresponding to amino acids 301-557 of human LGI1 (NP_005088.1).

Synonyms

EPT; ETL1; ADLTE; ADPAEF; ADPEAF; IB1099; EPITEMPIN; LGI1

Contact

☎ | 400-999-6126

✉ | cn.market@abclonal.com.cn

🌐 | www.abclonal.com.cn

Product Information

Source

Rabbit

Isotype

IgG

Purification

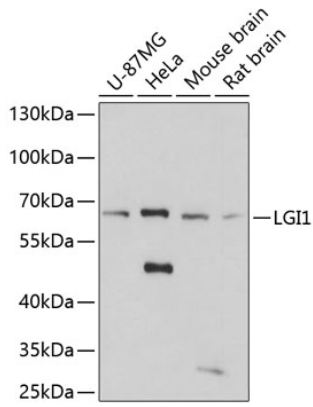
Affinity purification

Storage

Store at -20°C. Avoid freeze / thaw cycles.

Buffer: PBS with 0.01% thimerosal, 50% glycerol, pH7.3.

Validation Data



Western blot analysis of various lysates using LGI1 Rabbit pAb (A5408) at 1:3000 dilution.
Secondary antibody: HRP Goat Anti-Rabbit IgG (H+L) (AS014) at 1:10000 dilution.
Lysates/proteins: 25µg per lane.
Blocking buffer: 3% nonfat dry milk in TBST.
Detection: ECL Basic Kit (RM00020).
Exposure time: 90s.