

# [KD Validated] NDUFA13/GRIM19 Rabbit pAb

Catalog No.: A5412 **3 Publications**

## Basic Information

**Observed MW**

17kDa

**Calculated MW**

17kDa

**Category**

Primary antibody

**Applications**

WB,ELISA

**Cross-Reactivity**

Human, Mouse, Rat

## Background

This gene encodes a subunit of the mitochondrial membrane respiratory chain NADH dehydrogenase (Complex I), which functions in the transfer of electrons from NADH to the respiratory chain. The protein is required for complex I assembly and electron transfer activity. The protein binds the signal transducers and activators of transcription 3 (STAT3) transcription factor, and can function as a tumor suppressor. The human protein purified from mitochondria migrates at approximately 16 kDa. Transcripts originating from an upstream promoter and capable of expressing a protein with a longer N-terminus have been found, but their biological validity has not been determined.

## Recommended Dilutions

**WB** 1:500 - 1:1000**ELISA** Recommended starting concentration is 1 µg/mL. Please optimize the concentration based on your specific assay requirements.

## Immunogen Information

**Gene ID**

51079

**Swiss Prot**

Q9P0J0

**Immunogen**

Recombinant fusion protein containing a sequence corresponding to amino acids 1-144 of human NDUFA13/GRIM19 (NP\_057049.5).

**Synonyms**

B16.6; CDA016; CGI-39; GRIM19; GRIM-19; MC1DN28; [KD Validated] NDUFA13/GRIM19

## Contact

 | 400-999-6126 | [cn.market@abclonal.com.cn](mailto:cn.market@abclonal.com.cn) | [www.abclonal.com.cn](http://www.abclonal.com.cn)

## Product Information

**Source**

Rabbit

**Isotype**

IgG

**Purification**

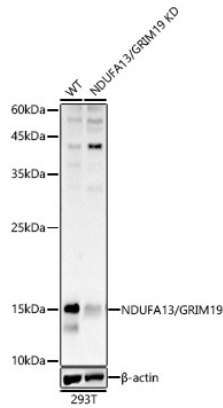
Affinity purification

**Storage**

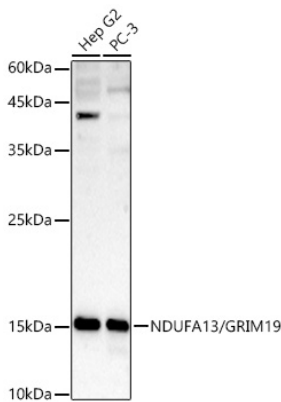
Store at -20°C. Avoid freeze / thaw cycles.

Buffer: PBS with 0.09% Sodium azide,50% glycerol,pH7.3.

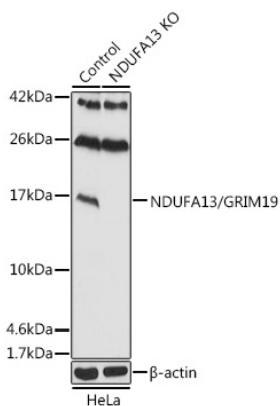
## Validation Data



Western blot analysis of lysates from wild type (WT) and NDUFA13/GRIM19 knockdown (KD) 293T cells, using [KD Validated] NDUFA13/GRIM19 Rabbit pAb (A5412) at 1:1000 dilution.  
Secondary antibody: HRP-conjugated Goat anti-Rabbit IgG (H+L) (AS014) at 1:10000 dilution.  
Lysates/proteins: 25µg per lane.  
Blocking buffer: 3% nonfat dry milk in TBST.  
Detection: ECL Enhanced Kit (RM00021).  
Exposure time: 90s.



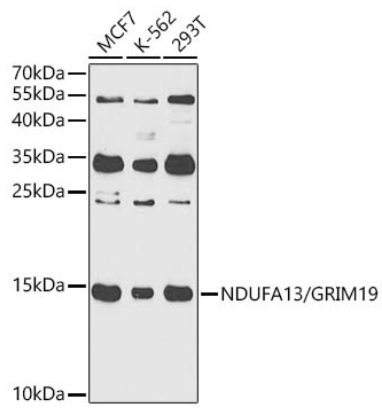
Western blot analysis of various lysates, using [KD Validated] NDUFA13/GRIM19 Rabbit pAb (A5412) at 1:1000 dilution.  
Secondary antibody: HRP-conjugated Goat anti-Rabbit IgG (H+L) (AS014) at 1:10000 dilution.  
Lysates/proteins: 25µg per lane.  
Blocking buffer: 3% nonfat dry milk in TBST.  
Detection: ECL Enhanced Kit (RM00021).  
Exposure time: 90s.



Western blot analysis of lysates from wild type (WT) and NDUFA13/GRIM19 knockout (KO) HeLa cells, using [KO Validated] NDUFA13/GRIM19 Rabbit pAb (A5412) at 1:1000 dilution.  
Secondary antibody: HRP-conjugated Goat anti-Rabbit IgG (H+L) (AS014) at 1:10000 dilution.  
Lysates/proteins: 25µg per lane.  
Blocking buffer: 3% nonfat dry milk in TBST.  
Detection: ECL Basic Kit (RM00020).  
Exposure time: 10s.

## Validation Data

---



Western blot analysis of various lysates using NDUFA13/GRIM19 Rabbit pAb (A5412) at 1:1000 dilution.  
Secondary antibody: HRP-conjugated Goat anti-Rabbit IgG (H+L) (AS014) at 1:10000 dilution.  
Lysates / proteins: 25 µg per lane.  
Blocking buffer: 3 % nonfat dry milk in TBST.  
Detection: ECL Basic Kit (RM00020).  
Exposure time: 90s.