

JunD Rabbit mAb

Catalog No.: A5433

Recombinant

1 Publications

Basic Information

Observed MW

38kDa/42kDa

Calculated MW

35kDa

Category

Primary antibody

Applications

WB,IP,ELISA,ChIP,CUT&Tag

Cross-Reactivity

Human, Mouse, Rat

CloneNo number

ARC1408

Background

The protein encoded by this intronless gene is a member of the JUN family, and a functional component of the AP1 transcription factor complex. This protein has been proposed to protect cells from p53-dependent senescence and apoptosis. Alternative translation initiation site usage results in the production of different isoforms (PMID:12105216).

Recommended Dilutions

WB 1:1000 - 1:6000

IP 0.5µg-4µg antibody for
200µg-400µg extracts of
whole cells

ELISA Recommended starting
concentration is 1 µg/mL.
Please optimize the
concentration based on
your specific assay
requirements.

ChIP 5µg antibody for
10µg-15µg of Chromatin

CUT&Tag 10⁵ cells /1 µg

Contact

☎ | 400-999-6126

✉ | cn.market@abclonal.com.cn

Immunogen Information

Gene ID

3727

Swiss Prot

P17535

Immunogen

A synthetic peptide corresponding to a sequence within amino acids 100-200 of human JunD (P17535).

Synonyms

AP-1; JunD

Product Information

Source

Rabbit

Isotype

IgG

Purification

Affinity purification

Storage

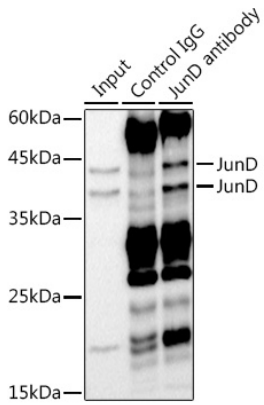
Store at -20°C. Avoid freeze / thaw cycles.

Buffer: PBS with 0.02% sodium azide,0.05% BSA,50% glycerol,pH7.3.

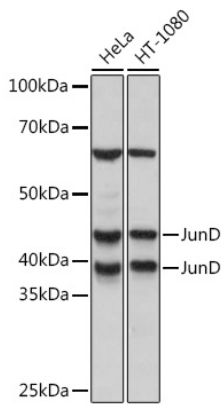


| www.abclonal.com.cn

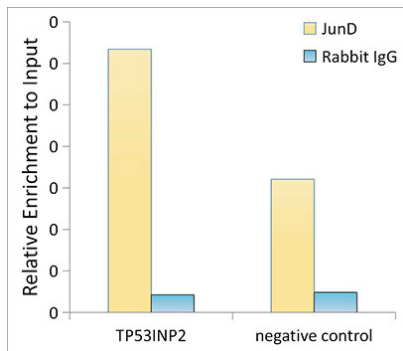
Validation Data



Immunoprecipitation analysis of 300 µg extracts of HeLa cells using 3 µg JunD antibody (A5433). Western blot was performed from the immunoprecipitate using JunD antibody (A5433) at a dilution of 1:1000.

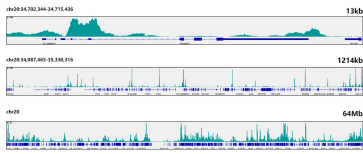


Western blot analysis of various lysates using JunD Rabbit mAb (A5433) at 1:1000 dilution. Secondary antibody: HRP-conjugated Goat anti-Rabbit IgG (H+L) (AS014) at 1:10000 dilution. Lysates/proteins: 25µg per lane. Blocking buffer: 3% nonfat dry milk in TBST. Detection: ECL Basic Kit (RM00020). Exposure time: 3s.



Chromatin immunoprecipitation analysis of extracts of HepG2 cells, using JunD antibody (A5433) and rabbit IgG. The amount of immunoprecipitated DNA was checked by quantitative PCR. Histogram was constructed by the ratios of the immunoprecipitated DNA to the input.

Validation Data



CUT&Tag was performed using the CUT&Tag Assay Kit (pAG-Tn5) for Illumina(RK20265) from 10^5 Hep G2 cells with 1 μ g JunD Rabbit mAb (A5433), along with a Goat Anti-Rabbit IgG(H+L). The CUT&Tag results indicate the enrichment pattern of JunD in representative gene loci (TP53INP2), as shown in figure.