

CDC34 Rabbit pAb

Catalog No.: A5457 **1 Publications**

Basic Information

Observed MW

32kDa

Calculated MW

27kDa

Category

Primary antibody

Applications

WB,IF/ICC,ELISA

Cross-Reactivity

Human, Mouse, Rat

Background

The protein encoded by this gene is a member of the ubiquitin-conjugating enzyme family. Ubiquitin-conjugating enzyme catalyzes the covalent attachment of ubiquitin to other proteins. This protein is a part of the large multiprotein complex, which is required for ubiquitin-mediated degradation of cell cycle G1 regulators, and for the initiation of DNA replication.

Recommended Dilutions

WB 1:500 - 1:1000

IF/ICC 1:50 - 1:200

ELISA Recommended starting concentration is 1 µg/mL. Please optimize the concentration based on your specific assay requirements.

Immunogen Information

Gene ID

997

Swiss Prot

P49427

Immunogen

Recombinant fusion protein containing a sequence corresponding to amino acids 150-236 of human CDC34 (NP_004350.1).

Synonyms

UBC3; UBCH3; UBE2R1; E2-CDC34; CDC34

Contact

 | 400-999-6126

 | cn.market@abclonal.com.cn

 | www.abclonal.com.cn

Product Information

Source

Rabbit

Isotype

IgG

Purification

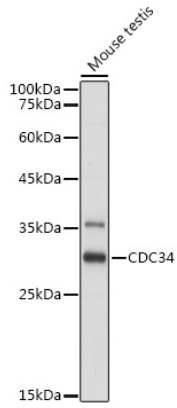
Affinity purification

Storage

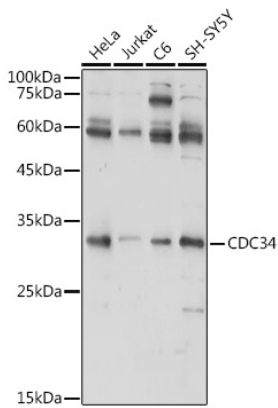
Store at -20°C. Avoid freeze / thaw cycles.

Buffer: PBS with 0.09% Sodium azide,50% glycerol,pH7.3.

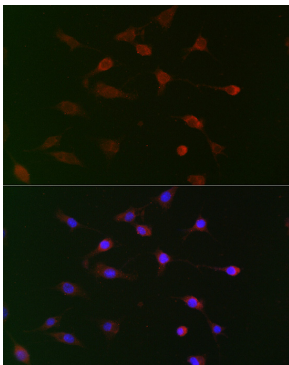
Validation Data



Western blot analysis of lysates from Mouse testis, using CDC34 Rabbit pAb (A5457) at 1:1000 dilution. Secondary antibody: HRP-conjugated Goat anti-Rabbit IgG (H+L) (AS014) at 1:10000 dilution. Lysates/proteins: 25µg per lane. Blocking buffer: 3% nonfat dry milk in TBST. Detection: ECL Basic Kit (RM00020). Exposure time: 1s.



Western blot analysis of various lysates using CDC34 Rabbit pAb (A5457) at 1:1000 dilution. Secondary antibody: HRP-conjugated Goat anti-Rabbit IgG (H+L) (AS014) at 1:10000 dilution. Lysates/proteins: 25µg per lane. Blocking buffer: 3% nonfat dry milk in TBST. Detection: ECL Basic Kit (RM00020). Exposure time: 30s.



Immunofluorescence analysis of BALB-3T3 cells using CDC34 Rabbit pAb (A5457) at dilution of 1:100 (40x lens). Secondary antibody: Cy3-conjugated Goat anti-Rabbit IgG (H+L) (AS007) at 1:500 dilution. Blue: DAPI for nuclear staining.