

# [KO Validated] HIF1AN/FIH1 Rabbit pAb

Catalog No.: A5466 **KO Validated** **3 Publications**

## Basic Information

### Observed MW

40kDa

### Calculated MW

41kDa

### Category

Primary antibody

### Applications

ELISA, WB, IHC-P, IF/ICC, IP

### Cross-Reactivity

Human, Mouse, Rat

## Background

Enables several functions, including 2-oxoglutarate-dependent dioxygenase activity; NF-kappaB binding activity; and transition metal ion binding activity. Involved in several processes, including negative regulation of Notch signaling pathway; negative regulation of transcription from RNA polymerase II promoter in response to hypoxia; and protein hydroxylation. Located in cytosol; nucleoplasm; and perinuclear region of cytoplasm. Colocalizes with nucleus.

## Recommended Dilutions

<b>WB</b>	1:500 - 1:2000
<b>IHC-P</b>	1:50 - 1:200
<b>IF/ICC</b>	1:50 - 1:200
<b>IP</b>	0.5µg-4µg antibody for 200µg-400µg extracts of whole cells

## Contact

☎ | 400-999-6126

✉ | [cn.market@abclonal.com.cn](mailto:cn.market@abclonal.com.cn)

🌐 | [www.abclonal.com.cn](http://www.abclonal.com.cn)

## Immunogen Information

### Gene ID

55662

### Swiss Prot

Q9NWT6

### Immunogen

Recombinant fusion protein containing a sequence corresponding to amino acids 1-349 of human HIF1AN/FIH1 (NP\_060372.2).

### Synonyms

FIH1; H1

## Product Information

### Source

Rabbit

### Isotype

IgG

### Purification

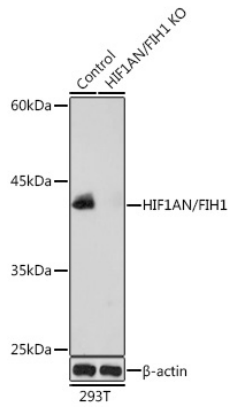
Affinity purification

### Storage

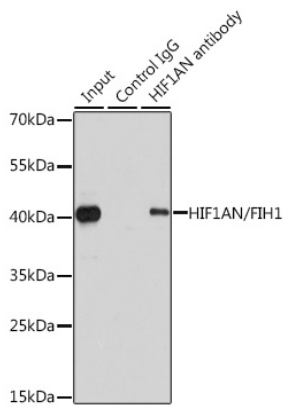
Store at -20°C. Avoid freeze / thaw cycles.

Buffer: PBS with 0.05% proclin300, 50% glycerol, pH7.3.

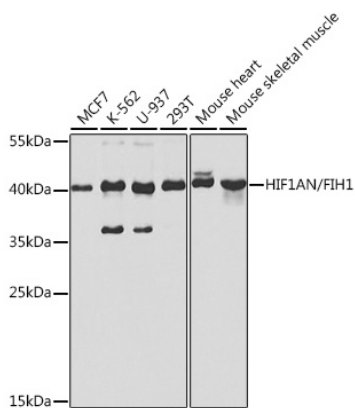
## Validation Data



Western blot analysis of lysates from wild type (WT) and HIF1AN/FIH1 knockout (KO) 293T cells, using [KO Validated] HIF1AN/FIH1 Rabbit pAb (A5466) at 1:1000 dilution.  
Secondary antibody: HRP Goat Anti-Rabbit IgG (H+L) (AS014) at 1:10000 dilution.  
Lysates/proteins: 25 $\mu$ g per lane.  
Blocking buffer: 3% nonfat dry milk in TBST.  
Detection: ECL Basic Kit (RM00020).  
Exposure time: 10s.



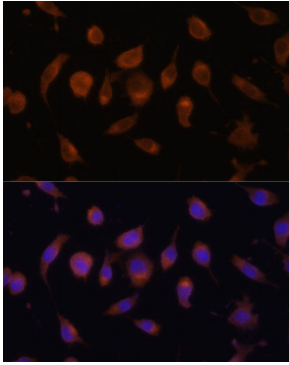
Immunoprecipitation analysis of 200  $\mu$ g extracts of 293T cells using 1  $\mu$ g HIF1AN/FIH1 antibody (A5466).  
Western blot was performed from the immunoprecipitate using HIF1AN/FIH1 antibody (A5466) at a dilution of 1:1000.



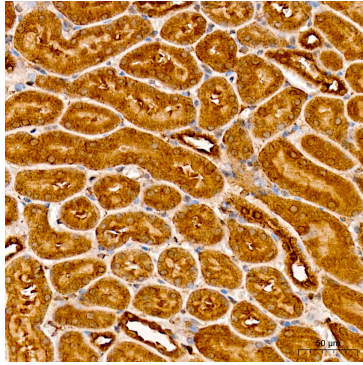
Western blot analysis of various lysates using [KO Validated] HIF1AN/FIH1 Rabbit pAb (A5466) at 1:1000 dilution.  
Secondary antibody: HRP Goat Anti-Rabbit IgG (H+L) (AS014) at 1:10000 dilution.  
Lysates/proteins: 25 $\mu$ g per lane.  
Blocking buffer: 3% nonfat dry milk in TBST.  
Detection: ECL Basic Kit (RM00020).  
Exposure time: 30s.

## Validation Data

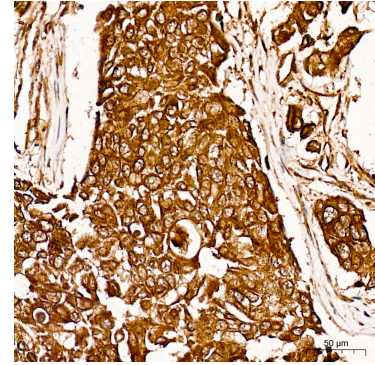
---



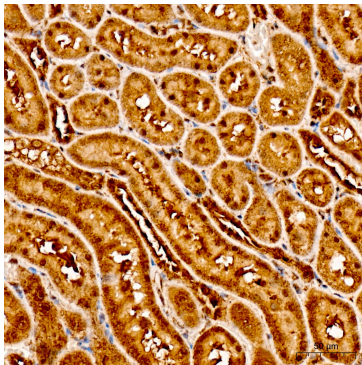
Immunofluorescence analysis of L929 cells using [KO Validated] HIF1AN/FIH1 Rabbit pAb (A5466) at dilution of 1:100. Secondary antibody: Cy3 Goat Anti-Rabbit IgG (H+L) (AS007) at 1:500 dilution. Blue: DAPI for nuclear staining.



Immunohistochemistry analysis of HIF1AN/FIH1 in paraffin-embedded Mouse kidney tissue using [KO Validated] HIF1AN/FIH1 Rabbit pAb (A5466) at a dilution of 1:100 (40x lens). High pressure antigen retrieval was performed with 0.01 M citrate buffer (pH 6.0) prior to IHC staining.



Immunohistochemistry analysis of HIF1AN/FIH1 in paraffin-embedded Human breast cancer tissue using [KO Validated] HIF1AN/FIH1 Rabbit pAb (A5466) at a dilution of 1:100 (40x lens). High pressure antigen retrieval was performed with 0.01 M citrate buffer (pH 6.0) prior to IHC staining.



Immunohistochemistry analysis of HIF1AN/FIH1 in paraffin-embedded Rat kidney tissue using [KO Validated] HIF1AN/FIH1 Rabbit pAb (A5466) at a dilution of 1:100 (40x lens). High pressure antigen retrieval was performed with 0.01 M citrate buffer (pH 6.0) prior to IHC staining.