

Myoglobin Rabbit pAb

Catalog No.: A5471 **3 Publications**

Basic Information

Observed MW

17kDa

Calculated MW

17kDa

Category

Primary antibody

Applications

WB, IF/ICC, ELISA

Cross-Reactivity

Human, Mouse, Rat

Background

This gene encodes a member of the globin superfamily and is predominantly expressed in skeletal and cardiac muscles. The encoded protein forms a monomeric globular haemoprotein that is primarily responsible for the storage and facilitated transfer of oxygen from the cell membrane to the mitochondria. This protein also plays a role in regulating physiological levels of nitric oxide. Multiple transcript variants encoding distinct isoforms exist for this gene.

Recommended Dilutions

WB 1:500 - 1:1000

IF/ICC 1:100 - 1:500

ELISA Recommended starting concentration is 1 µg/mL. Please optimize the concentration based on your specific assay requirements.

Immunogen Information

Gene ID

4151

Swiss Prot

P02144

Immunogen

Recombinant protein (or fragment). This information is considered to be commercially sensitive.

Synonyms

MYOSB; PVALB; Myoglobin

Contact

☎ | 400-999-6126

✉ | cn.market@abclonal.com.cn

🌐 | www.abclonal.com.cn

Product Information

Source

Rabbit

Isotype

IgG

Purification

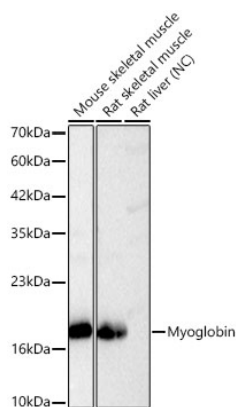
Affinity purification

Storage

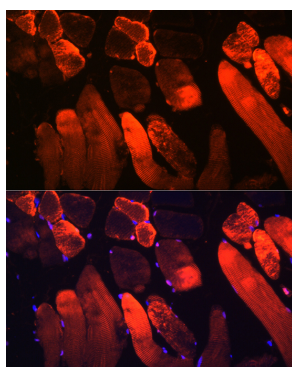
Store at -20°C. Avoid freeze / thaw cycles.

Buffer: PBS containing 50% glycerol, preserved with proclin300 or sodium azide (as specified on the Certificate of Analysis), pH 7.3.

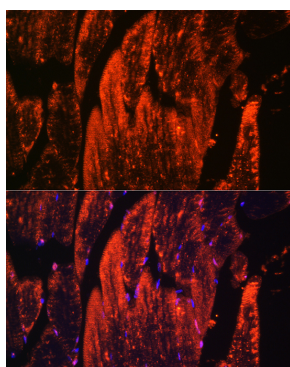
Validation Data



Western blot analysis of various lysates using Myoglobin Rabbit pAb (A5471) at 1:1000 dilution. Secondary antibody: HRP-conjugated Goat anti-Rabbit IgG (H+L) (AS014) at 1:10000 dilution. Lysates/proteins: 25 µg per lane. Blocking buffer: 3% nonfat dry milk in TBST. Detection: ECL Basic Kit (RM00020). Negative control (NC): Rat liver. Exposure time: 1s.



Immunofluorescence analysis of paraffin-embedded rat skeletal muscle using Myoglobin Rabbit pAb (A5471) at dilution of 1:300 (40x lens). Secondary antibody: Cy3-conjugated Goat anti-Rabbit IgG (H+L) (AS007) at 1:500 dilution. Blue: DAPI for nuclear staining.



Immunofluorescence analysis of paraffin-embedded mouse skeletal muscle using Myoglobin Rabbit pAb (A5471) at dilution of 1:300 (40x lens). Secondary antibody: Cy3-conjugated Goat anti-Rabbit IgG (H+L) (AS007) at 1:500 dilution. Blue: DAPI for nuclear staining.