

SIGMAR1 Rabbit pAb

Catalog No.: A5479

1 Publications

Basic Information

Observed MW

25kDa

Calculated MW

25kDa

Category

Primary antibody

Applications

ELISA, WB, IHC-P

Cross-Reactivity

Human, Mouse, Rat

Background

This gene encodes a receptor protein that interacts with a variety of psychotomimetic drugs, including cocaine and amphetamines. The receptor is believed to play an important role in the cellular functions of various tissues associated with the endocrine, immune, and nervous systems. As indicated by its previous name, opioid receptor sigma 1 (OPRS1), the product of this gene was erroneously thought to function as an opioid receptor; it is now thought to be a non-opioid receptor. Mutations in this gene has been associated with juvenile amyotrophic lateral sclerosis 16. Alternative splicing of this gene results in transcript variants encoding distinct isoforms.

Recommended Dilutions

WB 1:500 - 1:2000**IHC-P** 1:100 - 1:200

Immunogen Information

Gene ID

10280

Swiss Prot

Q99720

Immunogen

Recombinant fusion protein containing a sequence corresponding to amino acids 114-223 of human SIGMAR1 (NP_005857.1).

Synonyms

SRBP; ALS16; DSMA2; OPRS1; SR-BP; SIG-1R; SR-BP1; sigma1R; hSigmaR1; SIGMAR1

Contact

 | 400-999-6126 | cn.market@abclonal.com.cn | www.abclonal.com.cn

Product Information

Source

Rabbit

Isotype

IgG

Purification

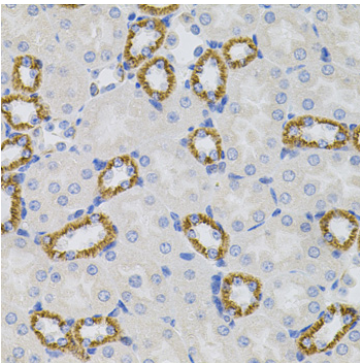
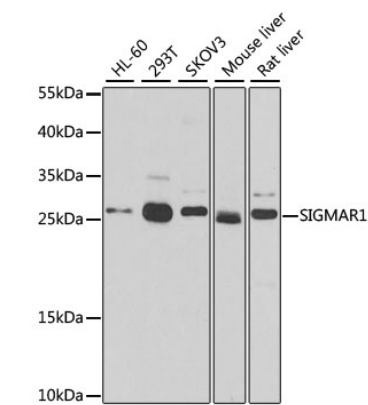
Affinity purification

Storage

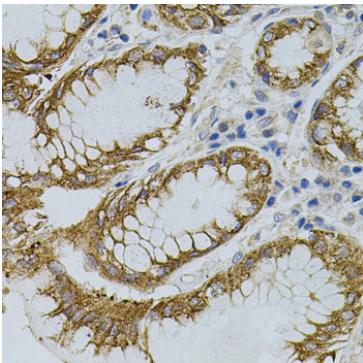
Store at -20°C. Avoid freeze / thaw cycles.

Buffer: PBS with 0.02% sodium azide, 50% glycerol, pH7.3.

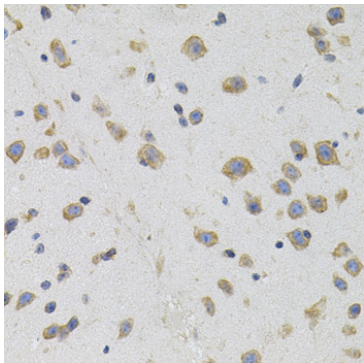
Validation Data



Immunohistochemistry analysis of SIGMAR1 in paraffin-embedded mouse kidney using SIGMAR1 Rabbit pAb (A5479) (40x lens).Perform microwave antigen retrieval with 10 mM PBS buffer pH 7.2 before commencing with IHC staining protocol.



Immunohistochemistry analysis of SIGMAR1 in paraffin-embedded human stomach using SIGMAR1 Rabbit pAb (A5479) (40x lens).Perform microwave antigen retrieval with 10 mM PBS buffer pH 7.2 before commencing with IHC staining protocol.



Immunohistochemistry analysis of SIGMAR1 in paraffin-embedded mouse brain using SIGMAR1 Rabbit pAb (A5479) (40x lens).Perform microwave antigen retrieval with 10 mM PBS buffer pH 7.2 before commencing with IHC staining protocol.