

PP2A-B56 γ /PR61 γ /PPP2R5C Rabbit pAb

Catalog No.: A5480 **1 Publications**

Basic Information

Observed MW

68-71kDa

Calculated MW

61kDa

Category

Primary antibody

Applications

ELISA, WB

Cross-Reactivity

Human, Mouse, Rat

Background

The product of this gene belongs to the phosphatase 2A regulatory subunit B family. Protein phosphatase 2A is one of the four major Ser/Thr phosphatases, and it is implicated in the negative control of cell growth and division. It consists of a common heteromeric core enzyme, which is composed of a catalytic subunit and a constant regulatory subunit, that associates with a variety of regulatory subunits. The B regulatory subunit might modulate substrate selectivity and catalytic activity. This gene encodes a gamma isoform of the regulatory subunit B56 subfamily. Alternatively spliced transcript variants encoding different isoforms have been identified.

Recommended Dilutions

WB 1:500 - 1:2000

Immunogen Information

Gene ID

5527

Swiss Prot

Q13362

Immunogen

Recombinant fusion protein containing a sequence corresponding to amino acids 1-320 of human PP2A-B56 γ /PR61 γ /PP2A-B56 γ /PR61 γ /PPP2R5C (NP_848702.1).

SynonymsB56G; PR61G; B56gamma; PP2A-B56 γ /PR61 γ /PPP2R5C

Contact

 | 400-999-6126 | cn.market@abclonal.com.cn | www.abclonal.com.cn

Product Information

Source

Rabbit

Isotype

IgG

Purification

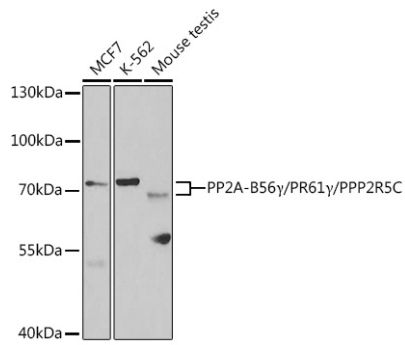
Affinity purification

Storage

Store at -20°C. Avoid freeze / thaw cycles.

Buffer: PBS with 0.02% sodium azide, 50% glycerol, pH 7.3.

Validation Data



Western blot analysis of extracts of various cell lines, using PP2A-B56 γ /PR61 γ /PP2A-B56 γ /PR61 γ /PPP2R5C antibody (A5480) at 1:1000 dilution.

Secondary antibody: HRP Goat Anti-Rabbit IgG (H+L) (AS014) at 1:10000 dilution.

Lysates/proteins: 25 μ g per lane.

Blocking buffer: 3% nonfat dry milk in TBST.

Detection: ECL Basic Kit (RM00020).

Exposure time: 30s.