

RFC4 Rabbit pAb

Catalog No.: A5485

2 Publications

Basic Information

Observed MW

40kDa

Calculated MW

40kDa

Category

Primary antibody

Applications

ELISA,WB,IF/ICC,IP

Cross-Reactivity

Human, Rat

Background

The elongation of primed DNA templates by DNA polymerase delta and DNA polymerase epsilon requires the accessory proteins proliferating cell nuclear antigen (PCNA) and replication factor C (RFC). RFC, also named activator 1, is a protein complex consisting of five distinct subunits of 140, 40, 38, 37, and 36 kD. This gene encodes the 37 kD subunit. This subunit forms a core complex with the 36 and 40 kDa subunits. The core complex possesses DNA-dependent ATPase activity, which was found to be stimulated by PCNA in an in vitro system. Alternatively spliced transcript variants encoding the same protein have been reported.

Recommended Dilutions

WB 1:500 - 1:2000**IF/ICC** 1:50 - 1:100**IP** 0.5µg-4µg antibody for
200µg-400µg extracts of
whole cells

Immunogen Information

Gene ID

5984

Swiss Prot

P35249

Immunogen

Recombinant fusion protein containing a sequence corresponding to amino acids 204-363 of human RFC4 (NP_002907.1).

Synonyms

A1; RFC37; RFC4

Contact

 | 400-999-6126 | cn.market@abclonal.com.cn | www.abclonal.com.cn

Product Information

Source

Rabbit

Isotype

IgG

Purification

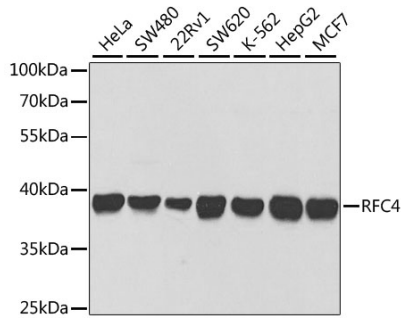
Affinity purification

Storage

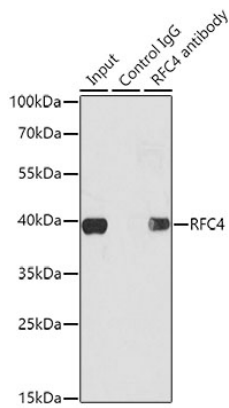
Store at -20°C. Avoid freeze / thaw cycles.

Buffer: PBS with 0.02% sodium azide,50% glycerol,pH7.3.

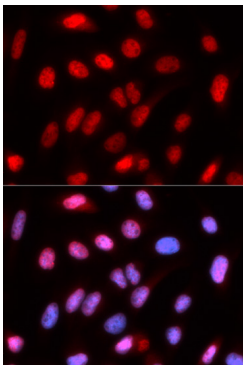
Validation Data



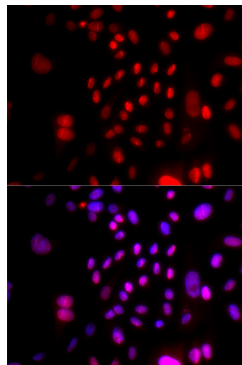
Western blot analysis of various lysates using RFC4 Rabbit pAb (A5485) at 1:1000 dilution.
Secondary antibody: HRP Goat Anti-Rabbit IgG (H+L) (AS014) at 1:10000 dilution.
Lysates/proteins: 25µg per lane.
Blocking buffer: 3% nonfat dry milk in TBST.
Detection: ECL Basic Kit (RM00020).
Exposure time: 10s.



Immunoprecipitation analysis of 200 µg extracts of K562 cells using 1 µg RFC4 antibody (A5485). Western blot was performed from the immunoprecipitate using RFC4 antibody (A5485) at a dilution of 1:1000.



Immunofluorescence analysis of U2OS cells using RFC4 Rabbit pAb (A5485). Secondary antibody: Cy3 Goat Anti-Rabbit IgG (H+L) (AS007) at 1:500 dilution. Blue: DAPI for nuclear staining.



Immunofluorescence analysis of U2OS cells using RFC4 Rabbit pAb (A5485). Secondary antibody: Cy3 Goat Anti-Rabbit IgG (H+L) (AS007) at 1:500 dilution. Blue: DAPI for nuclear staining.